

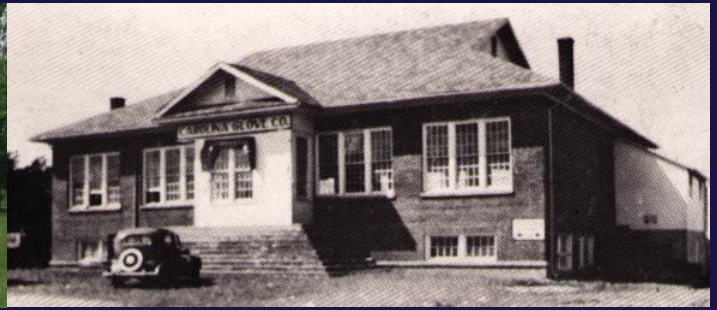
# CAROLINA

GLOVE & SAFETY COMPANY



American Made, Family Owned Since 1946

P.O. Box 999, Conover, NC 28613 • 1-800-438-6888 • [www.carolinaglove.com](http://www.carolinaglove.com)



Allow us to introduce ourselves.....

Carolina Glove & Safety Company is a Family owned company based in Conover, North Carolina. It has been owned and operated by the Abernethy family for over 69 years. Founded in 1946, our factories have the capability of producing over 65,000 dozen gloves per week. Our company has a selection of over 5,000 different glove styles and variations. Our product line includes Leather Palms, Double Palms, Leather Drivers, Welders, Canvas, Jerseys, Chores, Knits, Latex, Palm Coated, Garden, Kevlar®, Sleeves, Coated, Supported, Unsupported, Safety Items, and many types of Fabrics. In addition to our quality domestic line, Carolina Glove & Safety Company imports gloves that are specially made from many countries around the world. As an ISO 9001:2008 Registered Company; our commitment to quality and service enables us to ship products and make deliveries on a timely basis. Carolina Glove's tradition of ingenuity, commitment, and dedication has made us the quality choice for the most discriminating glove needs. Our products are constructed from the finest available materials and assembled by experienced craftsmen. Our gloves and materials are designed to meet your demands for performance, comfort, and value.

We boast a variety of styles....a glove for the industrial worker....the farmer....and even the gardener. We offer our domestic line as well as a full line of imports for the price conscious buyer. We are in step with the electronic age with EDI and tracing facilities. We can customize your fabric and gloves for special needs and market conditions. Our top priority is to meet or exceed our customer's expectations. All consumer gloves (retail) are tagged and have UPC bar codes. Our friendly Customer Service Department stands ready to offer immediate assistance to your calls.

# CAROLINA

## GLOVE & SAFETY COMPANY

For Glove & Safety Items

Call 800-438-6888

Fax: 828-464-1710

Internet address: [carolinaglove.com](http://carolinaglove.com)  
E-Mail address: [sales@carolinaglovecompany.com](mailto:sales@carolinaglovecompany.com)

# CAROLINA

## SPECIALTY FABRICS

For Fabric Items

Call 828-464-0367

Fax: 828-465-5791

Internet address: [carolinaspecialtyfabrics.com](http://carolinaspecialtyfabrics.com)  
E-Mail address: [sales@carolinaspecialtyfabrics.com](mailto:sales@carolinaspecialtyfabrics.com)

We are an ISO9001:2008 certified company and a



**Kevlar.**

Licensed Manufacturer.

# TABLE OF CONTENTS

PAGE 1.....	INTRODUCTION
PAGE 2.....	TABLE OF CONTENTS
PAGE 3.....	KEVLAR® SLEEVES
PAGE 4.....	KEVLAR®
PAGE 5.....	KEVLAR® KNITS
PAGE 6.....	SLEEVES
PAGE 7.....	FLANNELS
PAGE 8.....	DOUBLE PALMS
PAGE 9.....	JERSEYS
PAGE 10.....	HOTMILLS
PAGE 11.....	LEATHER PALMS
PAGE 12.....	LEATHER DRIVERS
PAGE 13.....	WELDERS
PAGE 14.....	POPULAR SPECIALTY/ UTILITY GLOVES
PAGE 15.....	OIL INDUSTRY
PAGE 16.....	STRING KNITS
PAGE 17.....	PALM COATED
PAGE 18.....	TERRY KNITS
PAGE 19.....	TERRY CLOTH
PAGE 20-21.....	SUPPORTED
PAGE 22.....	UNSUPPORTED
PAGE 23.....	CHEMICAL RESISTANCE CHART
PAGE 24.....	SAFETYWEAR
PAGE 25.....	SAFETYWEAR
PAGE 26.....	SAFETYWEAR
PAGE 27.....	RAINWEAR
PAGE 28.....	EYEWEAR
PAGE 29.....	SELECT THE RIGHT GLOVES TO FIT YOUR NEEDS
PAGE 30.....	GLOVE INFORMATION
PAGE 31-32.....	WOVEN FABRICS
PAGE 33.....	KNIT FABRICS
PAGE 34.....	CONSUMER STYLE # KEY
PAGE 35.....	CONSUMER STYLE # KEY
PAGE 36.....	CONSUMER STYLE # KEY
PAGE 37.....	MANUFACTURING PHOTOS/CAPABILITIES





DuPont™

# KEVLAR® SLEEVES

## Kevlar.



Courtesy of DuPont™

Cuts and gashes cause a great deal of pain and discomfort. They also lower the morale of the workforce. To better protect workers and to save time and money, protective wear made with Kevlar® makes a real difference. Independent tests show Kevlar® can be 2.5 times more cut-resistant than leather and 60% more so than cotton. Delivering comfort, long wear life, easy maintenance and launderability while saving you the cost of injuries, Kevlar® protects workers and makes good business sense too. In addition, to its superior cut protection, protective gloves and sleeves made with Kevlar® provide outstanding high temperature resistance and low thermal conductivity. Unlike flame-retardant cotton, Kevlar® is inherently flame resistant, and won't melt, burn, or support combustion in the air. Because this protection is permanent and cannot be washed out or worn away, Kevlar® is the ideal choice for workers who need protection from cuts, abrasion, sharp objects, and sparks or heat.

HKVKS143



HKVKS203



HKVKD143



HKVKD183TH



### Kevlar® Sleeve Single Ply 3" Width

Available in Light, Standard, or Heavy Weight. Single Ply Sleeve with overedging on both ends.

Available in 14" to 20" and longer lengths. Available with Thumb Hole or Thumb Slot. Sold Per Each.

\*(Heavy Weight Style Shown)

### Kevlar® Sleeve Double Ply 3" Width

Available in Light, Standard, or Heavy Weight.

Double Ply Sleeve with overedging on one end.

Available in 14" to 20" and longer lengths. Available with Thumb Hole or Thumb Slot. Sold Per Each.

\*(Heavy Weight Style Shown)



**KVSL724416**

16" Length, Made with Kevlar® Terry Cloth Sleeve, Cotton Knit Wrist, Available in a Variety of Lengths and Weights.



Kevlar® Roll



**HKVCLKD183TH**

Kevlar® Sleeve Double with Cotton Liner



**16" Welder Sleeve  
TWSL16EL5**

Made with Kevlar®, Knit Wrist with Thumb Hole, and Elastic. Resists sparks, pin-holing, and sheet metal spatters.



**Black Kevlar® Sleeve Single or Double Ply, 3" Width**

Available in Light, Standard, or Heavy Weight. Overedging. Available in 14" to 20" and longer lengths. Available with Thumb Hole or Thumb Slot. Sold Per Each.



**Black Kevlar® Sleeve with Fiber Shield™ Treatment**

**BKKVKWTH18:** With Fiber Shield™, Thumb Hole, and overedging.



DuPont™

# KEVLAR® GLOVES

## Kevlar.



**KV74257425**

- 100% Kevlar® Terry Cloth
- Available with Fleece, Wool, or Nomex® Lining
- Reversible
- ANSI Cut Level 4
- Heat Resistant



**KVHYTEMPWLB**

- 100% Kevlar® Terry Cloth
- Wool Lining
- Leather Reinforced Palm, Thumb, and Index Finger
- ANSI Cut Level 4
- Heat Resistant



**KVM732WL**

- 100% Kevlar® Terry Cloth Mitten
- Available with Wool or Nomex® Lining.
- Reversible- Fits Either Hand
- ANSI Cut Level 4
- Heat Resistant



**KV7244J**

- 100% Kevlar® Terry Cloth
- White Knit Wrist, Also Available in Band Top or Gauntlet Cuff
- Large and Jumbo Sizes
- ANSI Cut Level 4
- Heat Resistant



**KV7325WLODWL5**

- 100% Kevlar® Terry Cloth Outer Layer
- 5" Olive Drab Cuff
- Wool Lining
- ANSI Cut Level 4
- Heat Resistant



**KVHP24**

- 100% 24 oz. Kevlar® Terry Cloth Hand Pad
- Reversible
- Sold Per Each
- ANSI Cut Level 4
- Heat Resistant



**KVHPL24**

- 100% 24 oz. Kevlar® Terry Cloth Hand Pad
- Reversible, Extra Long
- Sold Per Each
- ANSI Cut Level 4
- Heat Resistant



**KVBP24**

- 100% 24 oz. Kevlar® Terry Cloth Baker's Pad
- Reversible
- Sold Per Each
- ANSI Cut Level 4
- Heat Resistant



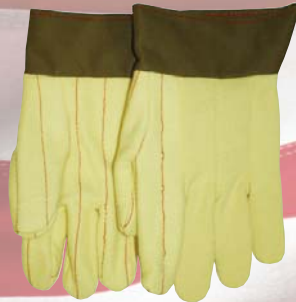
**KVMNQ742NMPWL**

- 100% Kevlar® Terry Mitten
- Wool Lined
- Nomex® Patch
- Heat Resistant



**KV1210PD**

- 100% Kevlar® with Plastic Dots for Grip and Wear.
- Gunn Cut, Slip-On Pattern
- Available in Gauntlet Cuff
- Sizes S-XL
- ANSI Cut Level 2



**KVA65285**

- 100% Kevlar® Jersey Outer Layer
- Hotmill Style with Band Top
- Available with Gauntlet Cuff
- ANSI Cut Level 3
- Heat Resistant

**LKVA65285**

Same as above, Ladies Size



**KV62104**

- 100% Kevlar® Jersey
- Cotton Knit Wrist
- Reversible, Fits Either Hand
- ANSI Cut Level 2
- Heat Resistant

**LKV62104**

Same as above, Ladies Size

## MADE IN THE U.S.A.



DuPont™

# KEVLAR® KNITS

## Kevlar.



**KV28**

- 100% Kevlar® Reversible
- Seamless Machine Knit
- Available in Various Weights and in Sizes XS-XL.
- ANSI Cut Level 3



**NFKV2211**

- 100% Kevlar® 1/2 Finger Reversible Seamless Knit
- PVC Dotted Both Sides
- Sizes Available in S-XL
- Available Without Dots- NFKV22
- Dotted One Side NFKV221
- ANSI Cut Level 2



**13KV12**

- 100% Kevlar® 13 gauge Lightweight Reversible Seamless Knit
- Available in Sizes S-XL
- ANSI Cut Level 2
- Available Dotted



**KVPLCK30**

- Made with Kevlar® Plated and Cotton Knit
- Available in Various Weights
- Sizes XS-XL
- ANSI Cut Level 2
- Available PVC Dotted



**KV22HC**

- 100% Kevlar® Machine Knit
- PVC Honeycomb Pattern on Both Sides
- Available Lightweight to Heavyweight, Sizes S-XL
- ANSI Cut Level 2



Versatile and strong, Kevlar® fiber is more than just a series of threads. DuPont™ Kevlar® fibers are five times the strength of steel based on an equal weight basis, it's the go-to fiber for protective apparel and accessories. Courtesy of DuPont



**KV2811**

- 100% Kevlar® Reversible Seamless Machine Knit
- Plastic Dotted on Front and Back for Extra Grip & Wear
- Available in Various Weights and in Sizes S-XL
- Available Dotted One Side
- ANSI Cut Level 2



**KVDUP30**

- 100% Kevlar® Armor Technology, Medium Weight.
- Made with Aramid & Steel Wire
- Available in Sizes M, L, & XL
- Available Plated
- ANSI Cut Level 4



**HEATELIM**

### THE HEAT ELIMINATOR™

- Exterior Layer Made of DuPont™ Nomex® and Kevlar®
- Interior Made of 100% Cotton
- Sold Per Each
- ANSI Cut Level 3



**KVMTCK743KW3**

- Machine Knit Kevlar® and Cotton Mock Twist Terry
- 3" Knit Wrist
- Reversible, Men's and Ladies' Size
- ANSI Cut Level 2

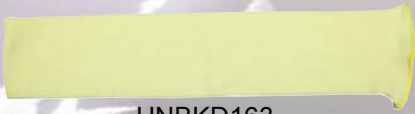


**KVCKSL68EN11**

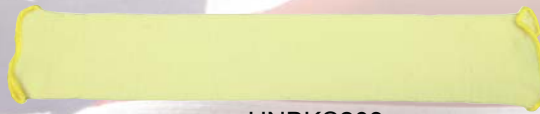
- Nitrile Block Dotted, Two Sides
- Kevlar® Machine Knit
- Reversible
- Extra Heavy Weight
- Sizes M-XL

## MADE IN THE U.S.A.

# SLEEVES



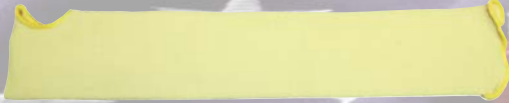
HNBKD163



HNBKS203



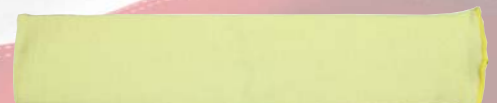
LNBKS143



HNBKD183TH



SNBKD163TH



LNBKD183

## PARA-ARAMID SLEEVE STYLES, **MADE IN THE USA!**

Cut Resistant Knit Sleeves, Available in Light, Standard, and Heavy Weight Styles, Overedged on Both Ends or One End. Available in Single Ply or Double Ply, 14"-over 20" Lengths. Available with Thumb Hole.



**100% COTTON  
TUBING &  
TERRY KNIT**



### NATURAL COTTON TUBING - **USA**

KWSLS12 12" inch Single Ply

KWSLS16 16" inch Single Ply

\*Available in Double Ply Also

KWSLS18 18" inch Single Ply

KWSLS20 20" inch Single Ply

### TERRY KNIT SLEEVE WITH THUMB SLOT



TKSLT21 21" inch Length



**TERRY KNIT SLEEVE,  
LOOP OUT**



TKSL18NRLO 18" Length,  
Elastic Ends



**EXTRA HEAVY TERRY SLEEVE,  
KNIT WRIST END, LOOP OUT**



SL724412 24 oz. 12" Sleeve  
SL724416 24 oz. 16" Sleeve  
SL732412 32 oz. 12" Sleeve  
SL732416 32 oz. 16" Sleeve



**TERRY KNIT SLEEVE,  
STANDARD WEIGHT,  
LOOP OUT**



TKSL18NRLOKW  
18" Length



**TERRY KNIT SLEEVE,  
LOOP IN, ELASTIC  
STRETCH**



TKSL18 18" Length

# FLANNELS



**White Cotton Canvas,  
Knit Wrist**

**USA** Import  
 — Men's Economy IE108W  
 108W 8 oz. Men's I108W  
 208W 8 oz. Ladies' I208W  
 110W 10 oz. Men's I110W  
 112W 12 oz. Men's I112W



**Two-Thumb  
Oyster Shucker**

**USA**  
 510W 10 oz.  
 512W 12 oz.



**Tough Polycord, Canvas**

**USA**  
 PC110W 10 oz. Men's Knit Wrist  
 PC210W 10 oz. Ladies' Knit Wrist  
 PC310 10 oz. Men's Band Top  
 PC410 10 oz. Ladies' Band Top



**White Canvas, with  
Band Top**

**USA** Import  
 310 10 oz. Large —  
 312 12 oz. Large I312



**White Canvas,  
Reversible Glove**

**USA** Import  
 708W 8 oz. Men's —  
 808W 8 oz. Ladies' —  
 710W 10 oz. Men's —  
 810W 10 oz. Ladies' —  
 712W 12 oz. Men's —



**White Canvas,  
Gauntlet Cuff**

**USA** Import  
 108G 8 oz. Waterproof Cuff I108G  
 108SG 8 oz. Starched Cuff —  
 110G 10 oz. Waterproof Cuff I110G  
 110SG 10 oz. Starched Cuff —  
 112G 12 oz. Waterproof Cuff I112G



**Tan PVC Dash  
Canvas**

**USA**  
 108TD 8 oz.



**Yellow Vinyl Coated  
Canvas, Impregnated,  
Cut-N-Sewn**

Import  
 IWNSVIWL, Large



**Black PVC Dotted  
Canvas**

**USA** Import  
 — Men's Econ. IE1313ST  
 1313 Men's Std. —  
 — Men's Std. I1313ST  
 D1313 Men's XL —  
 P1313 Men's Poly/Cotton  
 (Available in Ladies' Size)



**Orange PVC Dotted  
Canvas, Knit Wrist**

**USA** Import  
 D01313 Men's ID01313  
 D02313 Ladies'



**White Canvas,  
Navy Knit Wrist**

**USA** Import  
 108N 8 oz. Men's I108N  
 208N 8 oz. Ladies' I208N



**Olive Drab Canvas With  
Knit Wrist**

**USA** Import  
 108OD 8 oz. Men's —  
 110OD 8 oz. Men's —  
 112OD 12 oz. Men's —



# DOUBLE PALMS



**18 oz. Golden Brown Quilted Palm & Thumb with Stripe Back & Golden Brown Knit Wrist**

**USA**  
S118B Large



**18 oz. Golden Brown Quilted Palm & Thumb with Stripe Back and Cuff**

**USA** Import  
S118BSC Safety Cuff  
S118BG Gauntlet



**18 oz. Golden Brown "Turtleneck" Quilted Palm & Thumb with Stripe Back, Cuff, & Elastic**

**USA**  
S118BTNSCE Safety Cuff  
S118BTNGE Gauntlet Cuff



**Quilted Golden Brown Chore, Nap Out**

**USA** Import  
150 Knit Wrist, Men's IE150  
150L Knit Wrist, Ladies  
150G Waterproof Gauntlet



**18 oz. Golden Quilted Palm & Thumb, White Back & Cuff**

**USA** Import  
118BG Waterproof Gauntlet  
118BSC Waterproof Safety Cuff  
118BSG Starched Gauntlet



**Quilted Golden Brown, White Back**

**USA** Import  
114B 14 oz. Knit Wrist  
114BG 14 oz. Gauntlet  
118B 18 oz. Knit Wrist  
118B 18 oz. Band Top  
1318B



**Flame Retardant Olive Drab**

**USA**  
FRF118ODCG Gauntlet  
FRF170OD Band Top



**Long Wearing Polycord**

**USA** Import  
FPC118W 18 oz. Knit Wrist IPC118W  
FPC120W 20 oz. Knit Wrist  
FPC120SC 20 oz. Safety Cuff  
FPC320 20 oz. Band Top



**Quilted Double Palm**

**USA** Import  
116W 16 oz. Knit Wrist  
118W 18 oz. Knit Wrist  
118W 18 oz. Economy IE118W  
318 18 oz. Band Top I318  
120W 20 oz. Knit Wrist  
122W 22 oz. Knit Wrist



**Laminated Golden Brown Chore, Knit Wrist**

**USA** Import  
R150 Knit Wrist IHR150



**Orange Polycord, Knit Wrist**

**USA** Import  
OFPC118 IOPC1180



**18 oz. Green Double Woven Chore, Knit Wrist**

**USA** Import  
430 Men's Large I430  
430J Men's Jumbo

CALL 1-800-438-6888 TO ORDER!!

# JERSEYS



**Brown Jersey, Knit Wrist**

**USA** Import  
 — Med. Wt. Value IE125  
 125 9 oz. Med. Wt. I125  
 — Ladies' Med. Wt. I127  
 — Heavy Wt. Value IE130  
 127 9 oz., Ladies' —  
 130 10.5 oz. Men's I130  
 132 10.5 oz. Ladies' —  
 131 13 oz. Men's —



**Slip-On Style  
Brown Jersey**

**USA** Import  
 998 Heavy 13 oz. —  
 Brown Fleece Lined  
 — Red Fleece Lined I999



**"Tuff Dot" PVC  
Dotted Jersey**

**USA** Import  
 333 9 oz. Men's I333  
 233 9 oz. Ladies' I233



**Natural Thermal Knit,  
Liner Style Jersey**

**USA** Import  
 125TK Knit Wrist —



**Moleskin Lined Blue  
Jersey, Extra Heavy**

**USA** Import  
 BV999KW Knit Wrist —  
 BV999 Slip-On Style —



**"Blizzard Buster" Warm  
Navy Poly Fleece**

**USA** Import  
 06310 Men's Large —  
 06311 Boy's & Ladies' —



**Rubber Coated Palm  
& Index Finger, Dark  
Brown Jersey**

**USA** Import  
 — Men's Size IC125  
 — Ladies' Size IC127L



**Orange Poly/Cotton  
Blend Jersey**

**USA** Import  
 125PFO Knit Wrist I125PFO



**Two Piece Reversible  
Natural Jersey, 9 oz.**

**USA** Import  
 — 7 oz. IRJ7  
 — 8 oz. IERJ8  
 RJ9 9 oz. —  
 — PolyBlend IPRJ8



**Two Piece Reversible  
Brown Jersey, 9 oz.**

**USA** Import  
 RJ Men's Knit Wrist IRJ  
 RJL Ladies' Knit Wrist IRJL



**Cotton "Lisle" Gloves**

**USA** Import  
 — Men's Size IIOUH  
 — Ladies' Lt. Wt. ILIOUH  
 — 14" Length IIOUH14  
 — Men's Med. Wt. IMWIOUH  
 — Ladies' Med. Wt. ILMWIOUH



**"Inspector's"  
Nylon Gloves**

**USA** Import  
 — Men's Size IMISN  
 — Tricot, Men's IMITN  
 — Ladies' Size ILISN  
 — Tricot, Ladies' ILITN

# HOT MILLS



**Cotton Hotmill,  
Band Top, Knuckle Strap**

**USA** Import  
 170 No Attachments —  
 172 Pull Added —  
 174 24 oz. IA174  
 174XL 24 oz. IA174XL  
 — 28 oz. I174  
 17430 30 oz. I17430



**Waterproof Gauntlet  
Cuff Hotmill,  
Knuckle Strap**

**USA** Import  
 176 Pull Added —  
 178 24 oz. IA178  
 — 28 oz. I178  
 17830 Heavy I17830  
 \*Available in 32 oz.\*



**24 oz. Cotton Hotmill,  
Knit Wrist, Knuckle Strap**

**USA** Import  
 174KW3 3" Knit Wrist —  
 — Knit Wrist IA174KW



**28 oz., Cotton Hotmill,  
3 Ply, Rubberized  
Gauntlet Cuff, Knuckle  
Strap**

**USA**  
 FLF17826 Cotton/Rayon Liner



**Green Double  
Woven Face Cloth,  
Knuckle Strap,  
Waterproof Gauntlet**

**USA** Import  
 G178 24 oz. —



**Green Double Woven  
Face Cloth, Canvas Back  
with Knuckle Strap,  
Knit Wrist**

**USA** Import  
 G174KW3 24 oz. —



**Green Double Woven  
Face Cloth,  
Band Top Cuff,  
Knuckle Strap**

**USA** Import  
 G174 24 oz. —  
 G17430 30 oz. IG17430



**Heavy Duty Olive  
Drab Flame  
Retardant Hotmill**

**USA**  
 FRF170OD Band Top



**Heavy Duty Olive  
Drab, Flame  
Retardant, 24 oz.,  
Knit Wrist**

**USA**  
 FRF170ODKW3  
 \*Available with Knuckle  
Strap



**Flame Retardant  
Olive Drab, 24 oz.,  
2 Ply Hotmill,  
Nap-In**

**USA**  
 FRF170ODNI



**Olive Drab Flame  
Retardant Gauntlet Cuff**

**USA** Import  
 FRF178OD Gauntlet IFRF178OD  
 FRF174OD Band Top IFRF174OD

The Primary Use Of Hot Mill Gloves Are In Applications Involving Heat. Double or Triple Layers of Fabric Create A Natural Insulating Property. These Gloves Are Usually Sized Larger Than Snug Fit To Aid In Quick Removal Of Hot Objects. Hot Mills Can Be Bought Either Nap In Or Nap Out. The Outside Layer Is Composed Of Cotton To Insure The Proper Amount Of Insulation And To Protect Against Melting Of Synthetic Fibers. Olive Drab And Light Green Shows Less Dirt Than The Natural Color Hot Mill Gloves.

# LEATHER PALMS



**Men's Clute Cut,  
Shoulder Split Leather,  
Blue Knit Wrist**

**USA** Import  
5049 Men's Size I5049  
5049C Ladies Size I5049C



**Premium Full  
Feature Leather  
Palm, Knuckle Strap,  
Side Split Leather**

**USA** Import  
5755S (SC)\* I5755S  
— (G)\* I5755



**Full Feature Leather  
Palm, Knuckle Strap,  
Shoulder Split  
Leather, Value Style**

Import  
IE5455S Value Leather



**Green Reinforced  
Leather Palm, Split  
Cowhide, Knuckle  
Strap**

Import  
IEPR5455S, Value  
IPR5755S, Premium  
\*Available in Gauntlet



**Full Feature Leather  
Palm, Knuckle Strap,  
Shoulder Split Leather**

**USA** Import  
— Quality (SC)\* ITR5455S  
5455S Select (SC)\* I5455S  
5455 Select (G)\* I5455



**Full Leather Back,  
Rubberized Safety  
Cuff, Shoulder Split  
Leather**

**USA** Import  
5457S Select (SC)\* I5457S  
5457 Select (G)\* I5457  
5757S Premium (SC)\* I5757S  
5757 Premium (G)\* I5757



**Extra Heavy Premium Select  
Side Split Leather, Knuckle  
Strap, White Back**

**USA** Import  
WX5755S (SC)\* IAWX5755S  
WX5755 (G)\* IAWX5755  
\*Import Sewn With Kevlar® Thread\*



**Kevlar® Thread Sewn Double  
Palm, Gunn Pattern, Knuckle  
Strap, White Heavy Canvas  
Back, 2 3/4" Rubberized Safety  
Cuff, Premium Side Split Leather**

**USA** Import  
— Double Leather Palm IAWXPR5755S  
— Double Leather Palm IAWXPFR5755S  
& Fingers, Reinforced Thumb



**Top Grain, Flannel  
Lined, Waterproof Cuff**

**USA**  
5955S Safety Cuff  
5955 Gauntlet Cuff



**Kevlar Knit With  
Leather Palm**

Import  
IKVK545ORI Select Side  
Split Leather Palm, Large



**Select Grain Cowhide  
Leather Palm, White  
Canvas Back, Knuckle  
Strap, Safety Cuff**

**USA** Import  
W5955WTS, Safety C. —  
W5955WT, Gauntlet IW5955WT



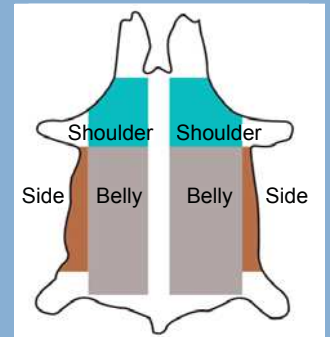
**Grain Cowhide, Knuckle  
Strap, Rubberized Cuff**

**USA** Import  
5955WT (G)\* I5955  
5955WTS (SC)\* I5955S



**Grain Cowhide Leather,  
Full Leather Back,  
White Gauntlet Cuff,  
Palm Lined**

**USA**  
W5957WT Wing Thumb



(SC)\* Safety Cuff  
(G)\* Gauntlet Cuff

# LEATHER DRIVERS



**Grain Cowhide Leather, Unlined, Keystone Thumb, Elastic Back**

Available in Sizes S-XL



Import

— Value IE9999KTE  
 — Quality ITR9999KTE  
 KT99KTE Select I9999KTE  
 — Premium IA9999KTE



**Grain Cowhide, Cotton Striped Back, Knuckle Strap, Shirred Elastic Back**

Available in XS-XL



BSB9965TE



**Grain Cowhide Leather, Straight Thumb, Shirred Elastic Back**

Available in Sizes S-XL



Import

— Value IE9999E  
 TR9999E Quality ITR9999E  
 9999E Select I9999E



**Grain Cowhide Leather, Slip-On Cuff, Straight Thumb**



A9999 XS-XXL



**Goatskin, Lanolin Treated, Unlined, Shirred Wrist**

Available in Sizes XS-XL

Import

IG9999KTE

\*Available Fleece Lined



**Golden Deerskin, Shirred Elastic Back, Keystone Thumb, Rolled Cuff**

Available in Sizes XS-XL



Import

— Quality ITRDG99KTE  
 — Premium IDG99KTE



**Grain Pigskin Leather, Straight Thumb, Shirred Elastic at Wrist, Unlined**

Available in Sizes S-XL



Import

P9999E IP9999E  
 — IP9999KTE

\*Import Keystone Thumb



**Grain Cowhide Leather, Keystone Thumb, Unlined**

Available in Sizes S-XL



Import

9999 Ball & Tape I9999KT  
 Fastener



**Grain Cowhide Leather, Keystone Thumb, Pull Strap Fastener**

Available in Sizes S-XL

Import

I9999PS



**Pearl Gray Split Cowhide, Shoulder Split, Shirred Elastic Back**

Available in Sizes S-XL



Import

8999E I8999KTE

\*Import- Keystone Thumb



**Grain Cowhide, Gray Split Leather Back, Keystone Thumb, Shirred Elastic Wrist**

Import

I99SBKTE Sizes S-XL



**Brushed Pigskin, Keystone Thumb, Shirred Elastic Back, Rolled Cuff**

Available in Sizes XS-XL



Import

BP99KTE IBP9999KTE



**Desert Sand, Split Cowhide, Shirred Elastic at Wrist, Straight Thumb**



6999E Sizes XS-XL



**Dark Brown Split Cowhide Leather, Keystone Thumb, Shirred Elastic Back**

Import

I7999KTE Sizes M-XL

\*Available Fleece Lined



**Cowhide Leather, PVC Dotted Fabric Back, Kevlar Lined**



KLB9967T Sizes XS-XL

# WELDERS



**Green Heat Resistant Welder Mitten, Lined Palm & Back**

**USA** Import  
MS48L



**Heat Resistant Leather, Fully Welted, 2-Piece**

**USA**  
S48L Lined Back & Palm  
48 Quality Welder, Unlined  
48L Quality Welder, Lined



**Full Heat Resistant Leather, Wing Thumb, Fully Welted & Lined**

**USA** Import  
Value Grade IES50  
52 Lined Back & Palm IS52



**Reflective Aluminized Leather Back, Heat Resistant Leather Palm, Lined Back & Palm**

**USA** Import  
52ALB&T Cotton Lining  
52ALB&TWL Wool Lining



**Select Leather With Wing Thumb, One-Piece Back, Fully Welted, Lined Palm & Back**

**USA** Import  
Value Grade IEBT52  
"Bucktan" Leather IBT52  
H52 "Hound Dog" Leather



**Brown Leather Welder With Reinforced Thumb, Kevlar® Thread Sewn, Full Sock Lined, Gunn Pattern**

**USA** Import  
Premium Select IS52RI  
Shoulder Leather



**Blue Leather Welder, Reinforced Thumb & Palm, Full Sock Foam Lined, Wing Thumb, Kevlar® Thread Sewn**

**USA** Import  
Premium Select IBL51RI  
Shoulder Leather  
Premium Side Split IBL52RI



**Foundry Welder, Kevlar® Thread Sewn, Reinforced Thumb, Full Sock Lined, Clute Pattern**

**USA** Import  
Premium Select IKTFWRI  
Shoulder Leather



**Grain Goatskin TIG Welder, Russett Split Safety Cuff**

**USA** Import  
TPG48SC



**Premium Grain Goatskin TIG Welder, Straight Thumb, Clute Pattern, Full Leather 2" Cuff**

**USA** Import  
TPG48BT ITPG48BT



**Grain Cowhide MIG Welder, Kevlar® Thread Sewn, Wing Thumb, Gunn Pattern, Split Cowhide Gauntlet Cuff**

**USA** Import  
4 1/2" Leather  
ITG48SC Gauntlet Cuff



**Goatskin TIG Welder, Kevlar® Thread Sewn, Gunn Pattern, Split Leather Gauntlet Cuff**

Import  
ITPG48SC

# POPULAR SPECIALTY



**Red Mechanics Gloves, Premium Simulated Leather, Spandex Fabric Back, Palm Patch, Velcro Strap**  
Import  
IRSPLVC XS-XL



**Blue Mechanics Gloves, Premium Simulated Black Leather, Spandex Fabric Back, Velcro Strap**  
Import  
IBLSPLVC XS-2XL



**Black Mechanics Gloves, Premium Simulated Black Leather, Spandex Fabric Back, Velcro Strap**  
Import  
IABKSPLVC XS-XL



**Razorguard™ Spectra & Stainless Steel, 7 & 10 Gauge**  
 **USA** Sizes S-XL  
**SPECTRA:** K65SPL, 10K44SPL  
**STAINLESS STEEL:** K78WIL, 10K45WIL



**"Palm Protector", Half Finger Leather, Velcro at Wrist, Padded Palm Patch**  
Import (S-XL)  
Solid Back IHF

## UTILITY GLOVES



**Cowhide Leather Driver, Keystone Thumb, Shirred Elastic at Wrist**  
 **USA**  
KTRB99KTE (S-XXL)



**Pearl Grain Goatskin Linesman Driver**  
 **USA**  
OPG639E Sizes (8-12)



**Premium Grain Sheepskin Leather Driver, Shirred Elastic Back Wrist, Straight Thumb**  
 **USA**  
SC99E Sizes (S-XL)



**Select Cowhide Grain Leather Palm, Striped Back & Safety Cuff, Knuckle Strap**  
 **USA**  
5955S Safety Cuff  
5955 Gauntlet Cuff



**Yellow Back, Grain Leather Palm, Knuckle Strap, Gauntlet Cuff**  
 **USA**  
CYA5955WT Sizes S-XL



**Select Cowhide Leather Palm, Full Leather Back, Split Leather Gauntlet Cuff**  
 **USA**  
URS5957PEG Sizes (9-12)



**Select Cowhide Grain Leather Palm, Leather Back, Striped Gauntlet Cuff**  
 **USA**  
5957WTE Sizes L & XL



**Leather Protective Linesman Gloves, Adjustable Strap, Gauntlet Cuff**  
 **USA** Size **USA** Size  
609 9 6011 11  
6010 10  
\*Available with Orange and Yellow Rubberized Gauntlet Cuff.

# OIL INDUSTRY



**Master Rigger® White Canvas, 12 oz. Weight**



112NPTD 100% Cotton



**Derrick® Tuff Polycord, 18 oz. Weight**



Import  
FPC118NPTD IFPC118R  
20 oz. IFPC120R



**Super Derrick® Heavy Canvas, Poly/Cotton Blend**



Import  
FP124RPTD



**“American Logger”, 24 oz. Cotton 2 Ply**



F174KW3PTD Large



**“Driller’s Gem”, 100% Cotton, 18 oz. Weight**



118WPTD Large



**Black PVC Dotted Canvas, Knit Wrist**



Import  
1313 Men’s (Std) —  
— Men’s (Std) I1313ST  
D1313 Men’s XL —  
P1313 Men’s Poly/Cotton  
\*Available in Ladies Size



**Orange PVC Dotted Canvas, Knit Wrist**



Import  
D01313 Men’s ID01313  
D02313 Ladies’



**Rig Glove™, Impact Protection, Thermal Plastic Back (TPR), Palm Grip, Kevlar® Stitching**

Import  
rigglove  
ANSI Cut Level 3



**Thermal Plastic Back Impact Protection (TPR), Nitrile Palm Coated, Cut Resistant HPPE Knit**

Import  
ANSI Cut Level 3



**Thermal Plastic Back Impact Protection (TPR), Nitrile Palm Coated, Nylon Knit**

Import



**Fluorescent Yellow Polycord, Knit Wrist**

Import  
IYPC118 Size Large



**Orange Polycord, 18 oz.**



Import  
OFPC118 IOPC118O



**Fluorescent Canvas Double Palm**

Import  
IO124O orange, 24 oz.  
IG124G green, 24 oz.



**Fluorescent Green Polycord, Knit Wrist**

Import  
IGPC118 Size Large 18 oz.



**Green Flame Retardant Polycord, Natural Knit Wrist**



GFRFC118W



# STRING KNITS



**Seamless, 100% Cotton, Reversible**  
USA Available in Sizes XS-XL  
Import Available in Sizes S & L

**USA** Import  
K22B5 Light Weight \_\_\_\_\_  
K24B5 Standard Wt. \_\_\_\_\_  
K26B5 Medium Wt. IK27B5  
K35B5 Heavy Wt. \_\_\_\_\_  
K40B5 X-Heavy Wt. \_\_\_\_\_



**Seamless, Full Cotton/Poly Knit**

**USA** Import  
\_\_\_\_\_ Light Wt. IK20CB5  
\_\_\_\_\_ Standard Wt. IK25CB5  
K26CB5 Med. Wt. IK27CB5  
\_\_\_\_\_ Heavy Wt. IK37CB5  
K40CB5 X-Heavy Wt. \_\_\_\_\_  
K28PC5 Med. Wt. \_\_\_\_\_  
K44PC5 X-Heavy Wt. \_\_\_\_\_



**Gray Mix String Knit**  
USA Available in Sizes XS-XL  
Import Available in Sizes S & L

**USA** Import  
K22GM5 Light Weight IK20GM5  
K24GM5 Standard Wt. \_\_\_\_\_  
K26GM5 Medium Wt. IK27GM5  
K35GM5 Heavy Wt. \_\_\_\_\_  
\_\_\_\_\_ Heavy Wt. IK37GM5  
K40GM5 X-Heavy Wt. \_\_\_\_\_



**Thermolite Knit, "The Ultimate Insulator"**

**USA** Import  
13K315THM White \_\_\_\_\_  
13K314THMN Navy \_\_\_\_\_



**13-Cut All Cotton Knit**

**USA** Import  
13K320 Knit Wrist \_\_\_\_\_



**Special Blends, Recycled Yarn Knit**

**USA**  
K32RC5MYEL Yellow OE  
K32RC5LGRN Green OE  
K32RC5XLB RN Brown OE  
\*Available in XS-XL



**13-Cut, 100% Nylon Inspector's Glove**

**USA**  
13KNI8 Light Weight  
13KNI12 Med. Wt.  
13KNI17 Heavy Wt.  
\*Available in Sizes S-XL



**13-Cut Cotton/Nylon**

**USA**  
13K15CN



**Multi-Color Cotton Blend, Elastic Knit Wrist, Seamless Knit, Reversible**

**USA**  
KMWBE5 Med. Wt.  
\*Colors May Vary



**One-Sided Black PVC Dotted**

**USA**  
K26CB1 Medium Wt.  
K40CB1 Heavy Wt.  
Import  
IK25CB1 Standard Wt.  
\*Available Small & Large



**100% Cotton, Natural Color, PVC Dotted Two Sides**

**USA** Sizes S-XL  
K24B11 Standard  
K26B11 Med. Wt.  
K40B11 Heavy Wt.  
**Cotton Blend**  
Import IK25CB11 Standard



**Gray Cotton Mix, PVC Dotted Two Sides**

**USA**  
K22GM11 Light Weight  
K24GM11 Standard Wt.  
K26GM11 Medium Wt.  
K35GM11 Heavy Wt.  
K40GM11 X-Heavy Wt.



**Multi-Weights, Ragg Wool, Available PVC-Dotted on Palm, Call For Colors**

Available in Sizes XS-XXL  
**USA**  
MNFWKD Fingerless  
K344WB5 With Fingers  
K28ODW Green Wool



**Synthetic Fashion Knit, Seamless, Reversible, Available Dotted**  
Available in Sizes XS-XL

**USA**  
AFK326C9 Fashion Knit  
AFK326C1 PVC Dotted on One Side, \*XS not Dotted.

Dotted Strings Available in Many Color Options!

# PALM COATED



**PVC Honeycomb Pattern, Acrylic Knit**  
Available in Sizes S-XL

Import  
KHC Heavy Wt. IKHC



**Textured Blue Latex Palm Coated, Yellow Cotton/Polyester Knit**

Available in Sizes XS-XL  
 Import  
— 10 Gauge IKBLPD  
EN Cut Level 2  
Gray Knit IKBLPDG



**Blue Latex Palm Coated, Cotton Blend Knit, Disposable**

Available in Sizes S, L, XL  
 Import  
— 10 Gauge IKLPC



**100% Kevlar® Knit With Ultra-Thin Black Nitrile Palm Coat**

Available in Sizes XS-XL  
Import  
13 Gauge I13KVKBPD  
EN Cut Level 2  
\*IKVKBLPD- Latex Coated



**One-Sided PVC Palm Coated, Natural White Cotton/Polyester Blend**

Available in Sizes S & L  
Import  
Brown Palm IK27CBBRNC



**Ultra-Thin Gray Nitrile Palm Coated, Nylon Knit**

Available in Sizes XS-XL  
Import  
13 Gauge I13KNIGNPD



**Ultra-Thin Polyurethane Coated, White Nylon Knit**

Available in Sizes XS-XL  
Import  
13 Gauge I13KNIWPUPD



**Ultra-Thin Gray Polyurethane Palm Coated, Gray Nylon Knit**

Available in Sizes XS-XXL  
Import  
13 Gauge I13KNIGPUPD



**Black Crinkle Latex Dipped, Gray Recycled Yarn Knit**

Import  
IKCBKPD Large



**Black Nitrile Palm Coated, Nylon Knit**

Import  
I13KNIBKNFPD (XS-XXL)  
13 Gauge Knit



**Cut Resistant Engineered String Knit, Polyurethane Palm Coated**

Available in Sizes S-XXL  
Import  
I13DK5PUPD EN 388 Cut Level 5  
I13DKPUPD EN 388 Cut Level 3



**Thermal Lined, Latex Palm Coated, 7 & 10 Gauge Knit**

Available in Sizes XS-XL  
Import  
I10KBKPD0RC9 Hi Viz Orange- 10 gauge  
I10KBLPDGRNC9 Hi Viz Green- 10 gauge  
I10KGLPDTLGC9 Gray/Gray- 10 gauge  
IKBLPDTLLGRC9 Hi Viz Green- 7 gauge  
IKBLPDTLNC9 Blue/Blue Palm- 7 gauge  
IKGLPDTLGC9 Gray/Gray Palm- 7 gauge



**Two-Sided Blue PVC Block Coat, Poly/Cotton Knit**

Available in S & L Sizes  
Import  
Standard Wt. IK25CB211B



## Palm Coated Uses

- Handling Glass
- Working with Machinery and Small Mechanical Parts
- Jobs Needing Finger Dexterity
- General Purpose

# TERRY KNITS



**Loop-Out Cotton Yarn, Reversible, Knit Wrist**

**USA** Import  
 K7334 Light Weight \_\_\_\_\_  
 K7404 Standard Wt. IK7184 \_\_\_\_\_  
 K7244 Medium Wt. IK7244 \_\_\_\_\_  
 K7504 Heavy Weight \_\_\_\_\_  
 K7614 Extra Heavy Wt. \_\_\_\_\_



**Cotton Yarn, Reversible, Gauntlet Cuff**

**USA** Import  
 K724G Standard \_\_\_\_\_  
 \*Available in Heavy Wt.\*



**Terry Knit, Band Top**

**USA** Import  
 K7245 Med. Wt. \_\_\_\_\_



**Loop-In, Continuous Cuff, Reversible**

**USA** Import  
 CBK738LLI Cotton Blend \_\_\_\_\_  
 K738LLI Cotton \_\_\_\_\_



**Bull's Eye, Loop-Out, Knit Wrist, (Colors May Vary)**

**USA** Import  
 BEK7404 Standard \_\_\_\_\_  
 BEK7464 Medium \_\_\_\_\_  
 BEK7504 Heavy \_\_\_\_\_



**Gray Mix Terry, Knit Wrist, Reversible, Loop-Out**

**USA** Import  
 GMK7334 Light Weight \_\_\_\_\_  
 GMK7404 Standard Wt. \_\_\_\_\_  
 GMK7464 Med. Wt. \_\_\_\_\_  
 GMK7504 Heavy Wt. \_\_\_\_\_  
 \*Available in X-Heavy Weight\*



**Gray Mix Terry, Loop-In, Continuous Cuff**

**USA** Import  
 GMK759LLI Med. Wt. \_\_\_\_\_  
 LGMK759LLI Ladies' \_\_\_\_\_



**Gray Mix Terry Knit, Heavy Weight, Reversible, Loop-Out**

**USA** Import  
 GMK746G Gauntlet \_\_\_\_\_



**Terry Knit, Reversible**

**USA** Import  
 K770E Elastic Band \_\_\_\_\_  
 K764NROE No Elastic \_\_\_\_\_



**Terry Knit, Double Layer Protection**

**USA**  
 K784SL



**Bleached Terry, Poly/Cotton, Loop-Out, Red Knit Wrist**

**USA**  
 BPC756RDSW Medium Wt.



**Bull's Eye Terry Knit, Loop-In, Continuous Cuff**

**USA**  
 BEK744LLI Standard Weight



**Terry Knit Sleeve With Thumb Slot**

**USA**  
 TKSLT21 21"

\*See Page 6 for more Terry Sleeves

# TERRY CLOTH



**24 oz. Heavyweight, Reversible**



7244J Knit Wrist, Jumbo  
7245J Band Top, Jumbo  
724GJ Gauntlet, Jumbo  
\*Available in 32 oz.\*



**24 oz. Heavyweight, Clute Cut**



71244J Knit Wrist, Jumbo  
71245J Band Top, Jumbo  
7124GJ Gauntlet, Jumbo  
\*Available in 32 oz.\*



**Extra Heavyweight, Reversible With Terry Band**



739572B 2" Terry Band  
739575B 5" Terry Band



**Extra Heavy Terry Cloth With Kevlar® Reinforcement**



7324JKVRI 32 oz.



**32 oz. Terry, Reversible, 4" Gauntlet Cuff**



7325745 Loop Out  
7325745RI Loop Out With Reinforced Patch



**Flame Retardant Heavy Terry, 12" 1-Piece Gauntlet Cuff**



FWE7305712 With Leather Loop



**Heavy Terry Cloth Mitten, Reversible**



M7244 Knit Wrist



**Terry Cloth, Reversible, Mock Twist**



MT739572B 2" Cuff  
MT739575B 5" Cuff



**Terry Cloth, Heavyweight Hand Pads, Reversible**



HP24 With Thumb Insert 24 oz.  
HP32 With Thumb Insert 32 oz.  
HPL24 Longer Version of Above 24 oz.  
HPL32 Longer Version Of Above 32 oz.

\*Sold Per Each



**Terry Cloth, Heavy Hand Pad, Reversible**



PH3 32 oz. With Reinforced Palm  
PH4 Same as Above, With No Reinforcement  
\*Sold Per Each



**Terry Cloth, Baker's Pad**



BP24 24 oz. With Hand Slot  
BP 32 oz. With Hand Slot  
BP24E 24 oz. With Elastic  
BPE 32 oz. With Elastic



**"Hot Stuff" Mitt With Hang Up Loop, Reversible**



HPTMITT Heavy Cotton Batting Middle Layer Quilted Between Terry Inner and Outer Layers.  
\*Sold Per Each

# SUPPORTED



**Rough Finish Blue Nitrile, 2 1/2" Plasticized Safety Cuff, Heavy Weight, Jersey Lined**



Import

- Fully Coated IBL08NSCRL Jersey Lined
- Palm Coated IBL08NPCRL Knit Wrist



**Smooth Finish Blue Nitrile With Safety Cuff, Heavy Weight Coated, Jersey Lined, 2 1/2" Plasticized Safety Cuff**

Available in Sizes S-XL



Import

- Fully Coated IEBL08NSC
- Palm Coated IEBL08NSCPC



**Smooth Finish Blue Nitrile Coated With Knit Wrist, Heavy Weight, Jersey Lined**

Available in Sizes S-XL



Import

- Palm Coated IEBL08NPC
- Fully Coated IEBL08N
- \*Light Weight, Palm Coated Large Only Style IELBL08NPC



**Brown Nitrile Palm & Index Finger Coated, Driver Style, Coated Fabric Back, Shirred Elastic Wrist**

Available in Sizes S-XL

Import

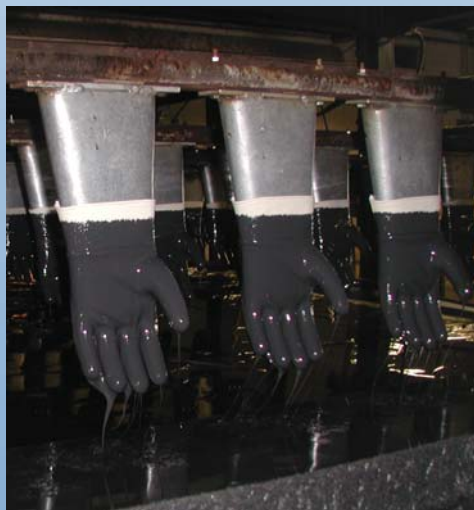
Gunn Pattern IBRN99



**Rust Vinyl, Impregnated, Slip-On Style, Stretch Fabric, Cotton Lined, Color Coded Hem**

Import

IHMS Men's Large (M-XL)  
IHLS Ladies' Size, (S-L)



**Blue Nitrile Coated, Cut & Sewn, Straight Thumb, Slip-On Style, Cotton Lined**

Available in Sizes S-XL

Style	Import
Men's Size	IMN
Ladies' size	ILN
Perforated Back, Men's	IMNPB
Perforated Back, Ladies'	ILNPB
Nylon Vented Back, Men's	IMNMB
Nylon Vented Back, Ladies'	ILNMB



**Seams Out Textured, Vinyl Coated, Slip-On Style**

Available in Sizes S-L

Import

ITVCJLOS Jersey Lined



**Seamless Textured Vinyl Coated, Slip-On Style**

Available in Sizes S-L

Import

ITVCIL Interlock Lined  
ITVCKL Knit Lined



**Natural Rubber Coated, Crinkle Finish, With Snug Knit Wrist**

Import

ICG800NR Standard Wt., Large



**Natural Rubber Coated, Crinkle Finish, With Safety Cuff**

Import

ICG800NRS Standard Wt., 2 1/2" Safety Cuff

# SUPPORTED



**Yellow PVC, Smooth Finish**



Import

Y08 Knit Wrist IY08  
 Y09 Band Top  
 Y010 10" Gauntlet  
 Y012 12" Gauntlet IY012  
 Y014 14" Gauntlet IY014



**Black PVC, Crinkle Finish**



Import

CG800B Knit Wrist ICG800B  
 CG809B Band Top  
 CG810B 10" Gauntlet ICG810B  
 CG812B 12" Gauntlet ICG812B  
 CG814B 14" Gauntlet ICG814B



**Red PVC, Crinkle Finish**



CG800R Knit Wrist  
 CG809R Band Top  
 CG810R 10" Gauntlet  
 CG812R 12" Gauntlet  
 CG814R 14" Gauntlet



**Green PVC, Smooth Finish**



G08 Knit Wrist  
 G09 Band Top  
 G010 10" Gauntlet  
 G012 12" Gauntlet  
 G014 14" Gauntlet



**Neoprene Coated, Interlock Lined**



Import

9634 Knit Wrist I9634  
 963612 12" Gauntlet I963612  
 963614 14" Gauntlet I963614  
 963618 Elbow Length



**Crinkle Finish Black Neoprene, Interlock Lined**



Import

— 12" Gauntlet ICGBNE012  
 — 14" Gauntlet ICGBNE014FM  
 Foam Lined



**Smooth Finish Black PVC Single Dipped**



Import

B08 Knit Wrist IB08  
 B09 Band Top  
 B010 10" Gauntlet IB010  
 B012 12" Gauntlet IB012  
 B014 14" Gauntlet IB014  
 — 18" Gauntlet IB018



**Black PVC, Sandpaper Finish, Double Dipped, Gauntlet Cuff**

Import

10", Interlock Lined IB010SF  
 12", Interlock Lined IB012SF  
 14", Interlock Lined IB014SF  
 10", Jersey Lined IB010JSF  
 12", Jersey Lined IB012JSF



**Rough Coat PVC, Pebble Coated, Rust Color**



Import

— 12" Gauntlet ICG1112RST  
 — Band Top ICG1109RST



**Foam Insulated Fully Coated Smooth Finish PVC, Fluorescent Orange**



Import

— Knit Wrist IHOF08  
 — 2 1/2" Rubberized Safety Cuff IHOF08SC  
 — 12" Gauntlet IHOF012  
 — 14" Gauntlet IHOF014



**Yellow PVC, Smooth Palm Coat**



PY09 Band Top



**Yellow PVC, Smooth Finish, Foam Lined**



HYF085 6" Knit Wrist  
 HYF09BT Band Top

# UNSUPPORTED



**Green Nitrile, Embossed Grip on Palm & Fingers, 13" Length**

Available in Sizes 7-11

Import

IGNF15 15 Mil, Flock Lined, Value

IGNFD15 15 Mil, Flock Lined

IGND15 15 Mil, Unlined

IGND11 11 Mil, Unlined

IAGND22 22 Mil, Unlined 18" Length (Sizes 8-11)



**Natural Canners Latex, Embossed Grip, 18 Mil, 12" Length**

Import

INRL18 Unlined Sizes S-XL



**Orange Heavy Weight Latex, Embossed Grip, 28 Mil, 13" Length**

Import

IOLF28 Flock Lined Sizes S-XL



**Blue Neoprene Over Yellow Latex, Embossed Grip, 28 Mil, 13" Length**

Import

IBLNEYLF28 Flock Lined Sizes S-XL



**Yellow Household Latex, Embossed Grip, Flock Lined, 12" Length**

Available in Sizes S-XL

Import

IYLF18 18 Mil

IYLF18B 18 Mil, Bagged Individually



**Black Neoprene, Embossed Grip, 30 Mil, 13" Length**

Available in Sizes S-XL

Import

IBNEFD30 Flock Lined



**Black Natural Rubber With Crinkle Finish, Rolled Cuff, 40 Mil**

Available in Size 11

Import

IABNR401411 14" Length

IABNR401811 18" Length



**Black Natural Rubber, Embossed Grip, Rolled Cuff, 40 Mil**

Import

IBNR401410 14" Length Size 10

IBNR4018 18" Length Size 10-11

IBNR402411 24" Length Size 11



**Disposable Latex Gloves, 5 Mil, Ambidextrous**

Available in Sizes S-XL

Import

ILEDPMG5 Medical Grade Lightly Powdered

ILEDMG5 Medical Grade Powder-Free

ILEDP5 Industrial Grade Lightly Powdered

ILED5 Industrial Grade Powder-Free



**Disposable Vinyl Gloves, 5 Mil, Ambidextrous**

Available in Sizes S-XL

Import

IVEDPMG5 Medical Grade Lightly Powdered

IVEDMG5 Medical Grade Powder-Free

IVEDP5 Industrial Grade Lightly Powdered

IVED5 Industrial Grade Powder-Free



**Disposable Industrial Grade Green Vinyl Gloves, 6.5 Mil, Ambidextrous**

Available in Sizes S-XL

Import

IGVEDP7 Lightly Powdered

\*100 Gloves Per Dispenser Box\*



**Disposable Nitrile Gloves, Ambidextrous, Micro-Textured, 4 Mil**

Import Sizes S-XL

IBLNMG4 Medical Grade Powder-Free

IBLN4 Industrial Grade Lightly Powdered

IBLN4 Industrial Grade Powder-Free

IBKN4 Black Industrial Grade Powder-Free

\*100 Gloves Per Dispenser Box\*

\*Available in 8 Mil\*

\*100 Gloves Per Dispenser Box\* \*100 Gloves Per Dispenser Box\*

# CHEMICAL GLOVE RESISTANCE CHART

	Chemical	Natural Rubber	Neoprene	Nitrile	Polyvinyl Chloride, PVC		Chemical	Natural Rubber	Neoprene	Nitrile	Polyvinyl Chloride, PVC
1	Acetaldehyde	F	E	P	NR	70	Isopropyl Alcohol	E	E	E	G
2	Acetic Acid	G	E	G	F	71	Kerosene	P	E	E	F
3	Acetone	G	G	NR	NR	72	Lactic Acid 85%	E	E	E	E
4	Acetonitrile	F	F	F	NR	73	Lauric Acid	G	E	E	F
5	Acrylic Acid	E	NR	G	NR	74	Linoleic Acid	P	E	E	G
6	Ammonium Fluoride	E	E	E	E	75	Linseed Oil	P	E	E	E
7	Ammonium Hydroxide < 30%	G	E	E	E	76	Maleic Acid Saturated	P	E	E	G
8	Amyl Acetate	F	NR	E	P	77	Methyl Acetate	P	G	P	NR
9	Amyl Alcohol	G	P	G	NR	78	Methyl Alcohol	E	E	E	G
10	Aniline	P	G	NR	F	79	Methylamine	E	G	E	E
11	Animal Fats	P	E	E	G	80	Methylene Bromide	NR	NR	NR	NR
12	Battery Acid	G	E	E	E	81	Methylene Chloride	NR	NR	NR	NR
13	Benzaldehyde	F	NR	NR	NR	82	Methyl Cellulosolve®	P	E	F	-
14	Benzene	NR	NR	P	NR	83	Methyl Ethyl Ketone, MEK	G	G	NR	NR
15	Benzoyl Chloride	P	NR	NR	NR	84	Methyl Isobutyl Ketone, MIBK	F	NR	P	NR
16	Butane	P	F	E	P	85	Methyl Methacrylate	P	NR	P	NR
17	Butyl Acetate	P	NR	F	NR	86	Mineral Oil	P	E	E	F
18	Butyl Alcohol	E	E	P	G	87	Mineral Spirits	NR	G	E	F
19	Butyl Cellosolve®	E	E	E	NR	88	Monoethanolamine	G	E	E	E
20	Carbolic Acid	P	E	P	G	89	Morpholine	G	P	NR	NR
21	Carbon Disulfide	NR	NR	NR	NR	90	Muriatic Acid	G	E	E	G
22	Carbon Tetrachloride	NR	P	G	NR	91	Naphtha VM&P	NR	G	E	P
23	Castor Oil	E	E	E	E	92	Nitric Acid < 30%	G	E	G	G
24	Cellosolve® Acetate	G	F	G	NR	93	Nitric Acid 70%	G	G	G	F
25	Cellosolve® Solvent	E	E	G	NR	94	Nitric Acid Red Fuming	P	NR	NR	P
26	Chlorine Gas	NR	NR	E	F	95	Nitric Acid White Fuming	P	NR	NR	P
27	Chlorobenzene	NR	NR	NR	NR	96	Nitrobenzene	P	NR	NR	NR
28	Chloroform	NR	F	NR	NR	97	Nitromethane	G	E	F	P
29	Chloronaphthalene	NR	NR	F	NR	98	1-Nitropropane	E	G	NR	NR
30	Chlorothene® VG	NR	NR	F	P	99	Octane	NR	E	E	P
31	Chromic Acid	NR	F	F	G	100	Octyl Alcohol	G	E	E	F
32	Citric Acid	E	E	E	E	101	Oleic Acid	P	E	E	F
33	Cottonseed Oil	P	E	E	G	102	Oxalic Acid Saturated	E	E	E	E
34	Cresol	P	G	G	F	103	Paint Remover	F	G	G	P
35	Cutting Oil	F	E	E	P	104	Palmitic Acid Saturated	G	E	G	G
36	Cyclohexane	P	F	E	P	105	Pentachlorophenol 1.25% H2O	P	E	E	F
37	Cyclohexanol	P	E	E	G	106	Pentane	P	E	E	NR
38	Diacetone Alcohol	NR	G	F	NR	107	Perchloric Acid 60%	P	E	E	E
39	Dibutyl Phthalate	P	F	E	G	108	Perchloroethylene	NR	NR	G	NR
40	Diethylamine	NR	P	F	NR	109	Phenol	G	E	NR	G
41	Di-Isobutyl Ketone	P	P	E	P	110	Phosphoric Acid, Conc.	E	E	E	E
42	Dimethyl Formamide DMF	E	G	NR	NR	111	Picric Acid Saturated/EtOH	G	E	E	E
43	Dimethyl Sulfoxide, DMSO	E	E	E	NR	112	Potassium Hydroxide <50%	E	E	E	E
44	Diostyl Phthalate, DOP	P	G	G	NR	113	Printing Ink	G	G	E	F
45	Dioxane	F	NR	NR	NR	114	Propyl Acetate	P	P	F	NR
46	Ethyl Acetate	P	F	NR	NR	115	Propyl Alcohol	E	E	E	F
47	Ethyl Alcohol	E	E	E	G	116	Propyl Cellosolve®	G	NR	G	F
48	Ethylene Dichloride	P	NR	NR	NR	117	Propylene Glycol	E	E	E	E
49	Ethylene Glycol	E	E	E	E	118	Propylene Oxide	P	NR	NR	NR
50	Ethyl Ether	NR	E	E	NR	119	Pyridine	NR	NR	NR	NR
51	Ethylene Trichloride	P	P	P	NR	120	Rubber Solvent	NR	G	E	NR
52	Formaldehyde	E	E	E	E	121	Safrotin	G	G	G	G
53	Formic Acid	E	E	E	E	122	Sodium Hydroxide, 50%	E	E	E	E
54	Freon® TF	NR	G	F	NR	123	Stoddard Solvent	P	E	E	NR
55	Furfural	E	G	NR	NR	124	Styrene	NR	NR	NR	NR
56	Gasoline White	NR	P	E	P	125	Sulfuric Acid 95%	NR	F	F	G
57	Glycerine	E	E	E	E	126	Tannic Acid 65%	E	E	E	E
58	Hexane	NR	E	E	NR	127	Tetrahydrofuran, THF	NR	NR	NR	NR
59	Hydraulic Fluid-Petroleum Base	P	F	E	G	128	Toluene	NR	P	G	NR
60	Hydraulic Fluid-Ester Base	P	P	P	P	129	Toluene Di-Isocyanate, TDI	P	NR	NR	P
61	Hydrazine 65%	G	E	E	E	130	1, 1,1-Trichloroethane	NR	NR	F	NR
62	Hydrochloric Acid 30%	E	E	E	E	131	Trichloroethylene, TCE	NR	P	G	NR
63	Hydrochloric Acid	G	E	E	E	132	Tricresyl Phosphate, TCP	G	F	E	F
64	Hydrofluoric Acid	G	E	E	E	133	Triethanolamine 85%, TEA	G	E	E	E
65	Hydrogen Peroxide 30%	E	E	E	E	134	Tung Oil	NR	E	E	F
66	Hydroquinone Saturated	G	E	E	E	135	Turbine Oil	P	E	G	F
67	Isoamyl Alcohol	G	E	E	G	136	Turpentine	P	G	E	F
68	Isobutyl Alcohol	E	E	E	F	137	Vegetable Oil	E	E	E	E
69	Iso-Octane	NR	E	E	P	138	Xylene, Xylol	NR	P	G	NR

## GLOVE PERFORMANCE CHART

	Physical Characteristics	Natural Rubber	Neoprene	Nitrile	PVC	CHART KEY
1	Abrasion Resistance	G	G	E	G	E = EXCELLENT
2	Elongation	E	E	G	F	G = GOOD
3	Heat Resistance	F	E	E	P	F = FAIR
4	Ozone Resistance	G	E	G	E	P = POOR
5	Tear Resistance	G	G	G	F	NR = NOT RECOMMENDED
6	Tensile Strength	E	E	E	F	



# SAFETYWEAR



## Full Brim Hard Hat

**42020** 6 Point Ratchet Suspension  
**42021** 6 Point Pinlock Suspension  
 \*With Pillowed Brow Pad and Top Ribbon Pad for Comfort.



## Yellow Bump Cap

**42033** 4 Point Pinlock Suspension Yellow Cap  
 Polyethylene Construction, Air Holes, Lightweight, For Minor Bumps, and Easy Adjustment



## Cap Style Hard Hat

**42000** 4 Point Pinlock Suspension  
**42001** 6 Point Pinlock Suspension  
**42002** 4 Point Ratchet Suspension  
**42003** 6 Point Ratchet Suspension  
 \* High Density Polyethylene Construction, PVC Brow Pad, Vertical Height Adjustment



Available Colors

Hard Hats Meet ANSI Z89,1-2009 Standard, Type 1 Class C, G, & E.



**Select Cowhide Shoulder Leather Palm, Fluorescent Orange Back, Reflective Knuckle Strap and Safety Cuff**  
 IASAFE5455S Size Large



## Reusable Earplugs

**41011 Uncorded**  
 Noise Reduction Rating 27dB, Washable & Reusable, 100 Pairs Individually Packaged Per Box.



## Reusable Earplugs

**41012 Corded**  
 Noise Reduction Rating 27dB, Washable, Complies with ANSI S3.19. 100 Pairs Individually Packaged Per Box



## Foam Earplugs

**41000 Uncorded**- 200 prs./Box  
**41001 Corded**- 100 prs./Box  
 Soft Foam, Tapered Shape, Noise Reduction Rating 31dB, Complies with ANSI S3.19



**40006-40010**  
 Fluorescent Orange Safety Vest, 2" Wide Fluorescent Yellow Stripes, Zipper Front, 100% Polyester, Sizes M-3XL, Class 2, ANSI/ISEA 107



**40003**  
 Fluorescent Orange Safety Mesh Vest, 2" Fluorescent Yellow/Silver Stripes, Velcro Closure, 100% Polyester, One Size Fits All.  
 #40002 Available with 1" Stripes



**40011-40015**  
 Fluorescent Green Safety Vest, Zip Closure, 2" Reflective Stripes, 100% Polyester, Class 2, ANSI/ISEA 107, Size M-3XL.



**40005**  
 Fluorescent Green Mesh Safety Vest, 2" Fluorescent Orange/Silver Stripes, Velcro Closure, 100% Polyester, One Size Fits All.  
 #40004 Available in 1" Stripes

# SAFETYWEAR



## 5-Buckle Strap Rubber Boots

Available in Sizes 6-16

**IBBRBFL** Fabric Lined, Bar-Tread Outsole, Over-The-Shoe Style



## Yellow Rubber Slush Boots, 17" Length

Available in Sizes 6-18

**I17YRBFL** Top Strap & Buckle, Fabric Lined, Bar-Tread Outsole, Over-The-Shoe Style



## Black PVC Boots, 16" Length, Bar-Cleat-Outsole, One Piece Injection Molded, Over-The-Sock Style

Available in Sizes 5-14

**I16BRB** Plain Toe

**I16BRBST** Steel Safety Toe

\* Meets ANSI Standard Z91 PT91 1/75 C/75



## Reinforced Toe Cap, Black Rubber Boots, 16" Length, Fabric Lined, Bar-Tread Outsole, Over-The-Sock Style

Available in Sizes 5-15

**I16BRBFL** Plain Toe

**I16BRBFLST** Steel Safety Toe

\*Meets ANSI Standard Z91 PT91 1/75 C/75



## Black Rubber Hip Wader, Steel Safety Toe, Fabric Lined, Steel Shank, Cushion Insole, Belt Loop Strap

Available in Sizes 6-16

**IBRHWFLST** Buckle Adjustment, Reinforced Knee & Front, Bar-Tread Outsole, Over-The-Sock Style

\*Meets ANSI Standard Z91 PT91 1/75 C/75

Bar-Cleat Outsole



Bar-Tread Outsole

Steel Toe Boots Give The User Extra Protection From Foot Injuries. Our Steel Toe Boots Comply With the ANSI Class 75 Standard.



## Shoe Cover

Available in Sizes L & XL

**ISC** Blue Polypropylene Spun Bond, Non-Skid Tread, Elastic Top

\*100 Pieces Per Dispenser\*

\*4 Dispensers Per Case\*



## Polypropylene Spun Bond Bouffant Caps

**IHCDS19W** 19" White

**IHCDS21W** 21" White

**IHCDS24W** 24" White

\*100 Pieces Per Bag\*

\*5 Bags Per Case\*



## Beard Covers, Soft Polypropylene Spun Bond, Light Weight

**IBCD** Comfortable to Wear, Ensures Completely Clean Operations

\*100 Pieces Per Bag\*

\*5 Bags Per Case\*



## Nuisance Masks

**IDM** Polypropylene Spun Bond, Fabric Wrapped Elastic Head Strap, Adjustable Aluminum Nose Piece

\*50 Pieces Per Box\*

\*20 Boxes Per Case\*



## Particulate Respirators, Latex-Free Double Head Strap, Adjustable Aluminum Nosepiece

**IN95PR** Niosh N95 Approved, Compliant with 42CFR Part 84, Meets CDC Guidelines for TB Exposure Control

\*20 Pieces Per Box\*

\*12 Boxes Per Case\*

# SAFETYWEAR



**Blue Denim Apron, 2 Pockets, Metal Grommets, Adjustable Ties**

**IABD12PP** 25" x 36"  
\*72 Pieces Per Case\*



**Back Support Belt, Tapered Abdominal Support Panels**

Available in Sizes S-3XL  
**BE200** Adjustable & Elastic Suspenders, Smooth Glide.



**Coverall With Collar, Polypropylene Spun Bond, Zipper Front**

Available in Sizes L-XXXL  
**IWC35** Medium Weight  
**IWC30** Standard Weight  
\*25 Pieces Per Case\*



**Vinyl Apron 35" x 45"**

**IAV6B** 6 Mil Thickness, Adjustable Ties  
\*50 Pieces Per Case\*



**Disposable Sleeves, 18" Length, Elastic Ends**

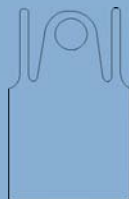
**ISL2PE18C** Clear Polyethylene  
**ISL2PE18B** Blue Polyethylene  
**ISL2PE18W** White Polyethylene  
\*2,000 Pieces Per Case\*

Our Safety-Wear Line Covers Your Safety Needs From Head to Toe. If You are Working in Stormy Weather, a Clean Room Environment, a Woodshop, or Behind a Food Service Counter, We Have You Completely Protected. We Offer a Wide Selection of Aprons for Various Industries. We Carry an Extensive Line of Protective Sleeves. All Sleeves are Manufactured for a Secure and Comfortable Fit.



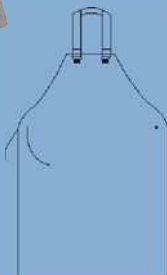
**Blue Denim Sleeves, 18" Length, Elastic Ends**

**ISL14BD18EE** 100% Standard Weight Cotton  
\*72 Pieces Per Case\*



**Disposable Polyethylene Apron, 28" x 46", Embossed**

**IDA** 1.25 Mil Thickness  
\*100 Pieces Per Box\*  
\*10 Boxes Per Case\*



**Yellow PVC/Polyester Apron, Adjustable Neck Strap, 35" X 47"**

**I35YA47** .35mm Thickness  
\*Individually Packed\*  
\*48 Pieces Per Case\*



**Disposable Polyethylene Food Glove, 1.25 Mil**

**IPD1** Sizes S-L  
\*100 Gloves Per Dispenser\*  
\*10 Dispensers Per Case\*



**Cut Resistant!**

**Razorguard™ Spectra & Stainless Steel, 7 & 10 Gauge**

 Sizes XS-XL  
**SPECTRA:** K65SPL, 10K44SPL  
**STAINLESS STEEL:** K78WIL, 10K45WIL

# RAINWEAR

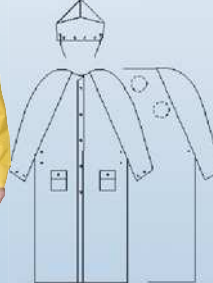


## PONCHOS, ATTACHED HOOD

**IYRP** Yellow Single-Ply Heavy Gauge Vinyl, .10 mm Thickness, 52" x 80", Side Snaps, One Size Fits All. 36 Pieces Per Case.

**IDRP** Clear Polyethylene, .02 mm Thickness, 50" x 80", Sealed Sides. 288 Pieces Per Case.

\* We also offer Orange and Camouflage Ponchos, Styles #17101 and 17102.

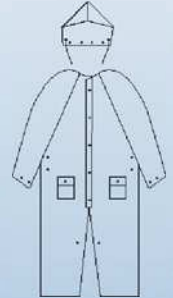


## PVC/POLYESTER 2 PIECE YELLOW RAINCOAT, WITH DETACHABLE HOOD, 48" LENGTH

Available in Sizes S-6XL

**I35RC482** .35mm Thickness, Fly Front Snaps, 12 Pieces Per Case.

\* Also available in Orange



## PVC/POLYESTER 2-PIECE YELLOW SLICKER, 60" LENGTH, .35mm THICKNESS

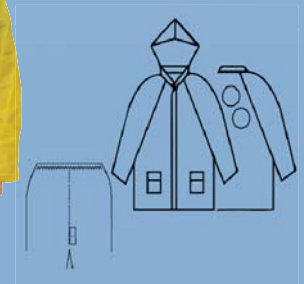
Available in Sizes S-3XL

**I35RC602** Slicker with Detachable Hood, Storm Fly Front, Front Snaps, 10 Pieces Per Case. \*Also Available in Black.

## PVC/POLYESTER 3-PIECE YELLOW COVERALL PANTS, JACKET, DETACHABLE HOOD

**I25RS** .25 mm Thickness, 1-Layer, Sizes S-3XL  
**I35RS2** .35 mm Thickness, 2-Layer, Sizes S-7XL  
**I35RS3** .35 mm Thickness, 3-Layers, Sizes S-4XL

- Corduroy Collar For Comfort
- Cape Back with Nylon Vents for Breathability
- Under Arm Vents For Breathability
- Zipper Front For Extra Protection
- Two Front Flap Pockets For Storage & Convenience
- Adjustable Suspender Clips For Easy Fastening
- Heat Welded Stitches For Tear Resistance
- Adjustable Ankle Snaps & Cuff Snaps For Better Fit



## PVC, 3-PIECE RAINSUIT WITH ELASTIC PANTS, JACKET, DETACHABLE HOOD

Available in Sizes S-3XL

**I10RS** .10mm Thickness, 1-Layer



Measure Chest Circumference Under Arm Pits For Proper Sizing

34-36	38-40	42-44	46-48	50-52	54-56	58-60	62-64	66-68	70-72
SMALL	MEDIUM	LARGE	X-LARGE	2XL	3XL	4XL	5XL	6XL	7XL

# EYEWEAR



**ISGCBMGNF**  
Blue Mirror Finish  
With Gray Frame



**ISGCANF** Amber Lens



**ISGCGNF** Gray Lens



**ISGCGNFAF** Anti-Fog  
Gray Lens



**ISGCCNF** Clear Lens

**ISGCCNFAF** Anti-Fog



**ISGCIOMCNF**  
Indoor/Outdoor Clear Mirror Lens



**ISGCSMNF** Silver  
Mirror Lens



**ISGCBMSNF**  
Blue Mirror Finish  
On Clear Lens

WRAP AROUND STYLE, UNIVERSAL FIT TEMPLES, SCRATCH RESISTANT POLYCARBONATE LENS, BLOCKS 99.9% OF HARMFUL UV LIGHT, MEETS OR EXCEEDS ANSI Z87.1-2010 STANDARDS \*12 Pieces Per Dispenser\* \*12 Dispensers Per Case\*



SPORTY WRAP AROUND LENS,  
BLACK RUBBER TEMPLE TIPS,  
POLYCARBONATE, SCRATCH  
RESISTANT

**ISGCGNFRT** Gray Lens  
**ISGCFNFRTAF** Anti-Fog Gray Lens



**ISGCIONFRT** Indoor/Outdoor Lens



**ISGCCNFRT** Clear Lens

**ISGCCNFRTAF** Anti-Fog



**ISGCANFRT** Amber Lens



CAROSPEC SAFETY GLASSES, LIGHT-  
WEIGHT NYLON FRAME, ONE PIECE WRAP  
AROUND DESIGN

**ISGCAB** Clear Lens, **ISGGAB** Gray Lens,  
**ISGCABAF** Anti-Fog Lens, Adjustable Temples  
Ensures a Comfortable Fit, Scratch Resistant  
Polycarbonate Lens, \*\*12 Dispensers Per Case\*\*,  
Ask About Other Colored Frames and Lens  
Colors Available!!



POLYCARBONATE VISITOR  
SPECTACLES, FITS OVER GLASSES

**ISGC** Clear Lens, 144 Pieces Per Case



CAROSPEC SAFETY GLASSES, CLEAR  
LENS, BLACK FRAME, SOFT RUBBER  
NOSE PIECE, ADJUSTABLE TEMPLES,  
SCRATCH RESISTANT

**ISGCRNCB**, 144 Pieces per Case



CAROSPEC SAFETY GLASSES, LIGHT-  
WEIGHT, 1-PIECE NYLON FRAME, SLEEK  
CONTEMPORARY STYLING OFFERS  
UNOBSTRUCTED VISION

**ISGCCB** Ratchet Action Temples for Maximum  
Comfort & Fit, Scratch Resistant Polycarbonate  
Lens, Clear Lens, and Black Frame

**ISGGCB** Also Available in Gray Lens

\*12 Dispensers Per Case\*



DIRECT SIDE VENTILATION  
SAFETY GOGGLES

**ISGV**, 144 Pieces Per Case



INDIRECT SIDE VENTILATION  
SAFETY GOGGLES, SPLASH  
PREVENTION, ADJUSTABLE  
LATEX FREE HEADSTRAP

**ISGIDV** Clear Lens

**ISGIDVAF** Anti-Fog Lens

\* 144 Pieces Per Case

# SELECT THE RIGHT GLOVE TO FIT YOUR NEEDS!

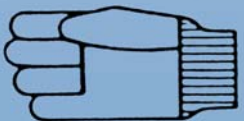
	ASSEMBLY	CONSTRUCTION	FOOD PROCESSING	FOUNDRY	IRON/STEEL WORK	JANITORIAL	LUMBER	METAL STAMPING	OIL DRILLING/ REFINING	WAREHOUSE	WELDING
COTTON CANVAS	✓	✓		✓		✓	✓	✓	✓	✓	
CHORE		✓		✓	✓		✓	✓	✓	✓	
JERSEY	✓	✓	✓		✓	✓	✓			✓	
STRING KNIT	✓	✓	✓			✓				✓	
LEATHER PALM	✓	✓	✓	✓	✓	✓	✓	✓	✓	✓	✓
LEATHER DRIVER	✓	✓	✓		✓		✓	✓	✓	✓	✓
HOT MILL	✓			✓	✓		✓	✓	✓		✓
LATEX/RUBBER	✓	✓	✓			✓	✓				
NITRILE	✓	✓	✓			✓	✓	✓	✓	✓	
NEOPRENE	✓	✓	✓	✓		✓	✓	✓	✓	✓	
PVC	✓	✓	✓	✓		✓	✓	✓	✓	✓	
KEVLAR	✓	✓	✓	✓	✓	✓	✓	✓	✓	✓	✓



**Clute Pattern (Straight Thumb) (ST)**  
Excellent fit, usually straight thumb, not a reversible pattern.



**Reversible Pattern (Gunn Cut, Wing Thumb) (WT)** Thumb at side of glove, permitting glove to be worn on either hand.



**Gunn Cut Pattern** Palm side of gloves' surface extends two-thirds of the way around the fingers.



**Slip-On Pattern** Allows easy On/Off; has no Cuff.



**Keystone Thumb (KT)** Comfortable, Sewn-in-Thumb.



## MEASURING GLOVE SIZE

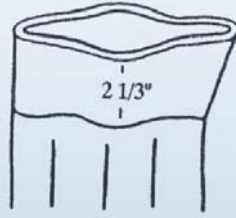
The chart below illustrates how to determine the user's glove size when selecting hand protection. It is an approximate size range. Measure the circumference of your hand in inches between your thumb and knuckle.

Size in Letters	XXS	XS	S	M	L	XL	2XL	3XL
Circumference of your hand	5"-6"	6"-7"	7"-8"	8"-9"	9"-10"	10"-11"	11"-12"	12"-13"
Synthetic (Size in numbers)	5	6	7	8	9	10	11	12
Leather (Size in numbers)	6	7	8	9	10	11	12	13

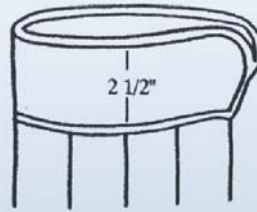
# GLOVE INFORMATION



Knit Wrist



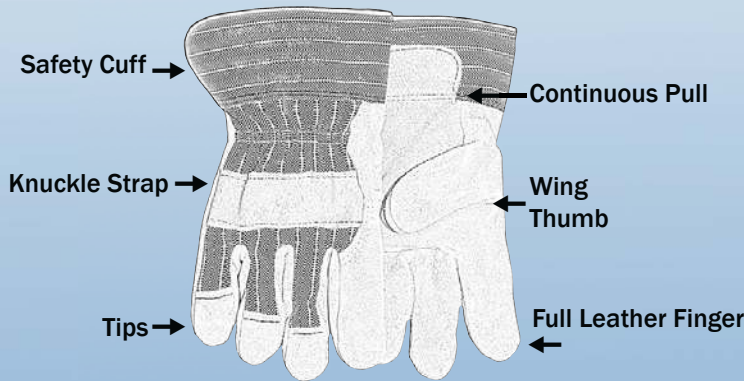
Band Top



Safety Cuff



Gauntlet Cuff



Thinsulate Lining

Heavy Pile Lining

Fleece Lining

Thermal Weave

Jersey Lining

## TYPES & CUTS OF LEATHER

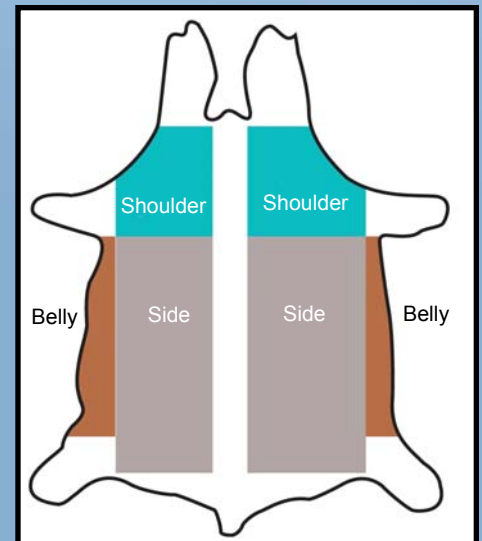
- Cow- Cowhide Leather is the most commonly used leather within the glove industry due to its plentiful availability. Chrome tanning of this leather provides greater wear and heat resistance.
- Pig- Pigskin affords the greatest breathability due to the porous texture of this hide. Additionally, pigskin tends to become softer with use and withstands moisture without stiffening. When laundered, this leather will return more to its natural soft texture.
- Goat- Goatskin provides natural lanolin that helps to create abrasion resistance.
- Deer- Deerskin is one of the toughest leathers available due to the thorny nature of the animal's natural habitats. Deerskin leather's high tensile strength is abrasion resistant and offers high durability.

### Cuts of Leather

Grain- Grain Leather is the smooth external side of the hide.

Split- Split Leather is the rougher internal side of the hide. The different types will be side, shoulder, or belly split.

- Side Split- Side split is the most durable and provides the greatest density of fibers.
- Shoulder Split- Shoulder split leather is more economical, but less durable.
- Belly Split- Belly split leather is the most economical, but it has the least consistency of texture and appearance.

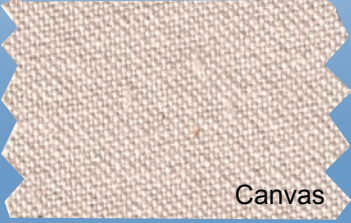


We offer FR Treatments, Specialty Yarns, Heat Transfers, Block Printing, Leather Pad Printing, Custom Sizing, PVC Dotted in Various Colors, UPC Barcoding, Special Packaging, and More. Call us at 1-800-438-6888 for more information.

# WOVEN FABRICS

## SPECIALTY FABRICS

- Environmentally Friendly
- Boating ■ Backpacks
- Sandbags ■ Banners



Canvas



EcoSpun Dyed



EcoSpun

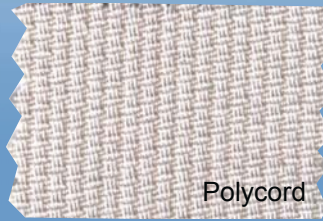
Eco fibers are based on a unique nature-spun recycled polyester yarn that is made from recycled plastic bottles destined for a landfill. The fibers offer durability, style, and moisture resistance.

## APPAREL FABRICS

- Oxfords
- Poly Cotton Shirting
- Flannels
- Jumpsuit Fabrics



Bull Denim



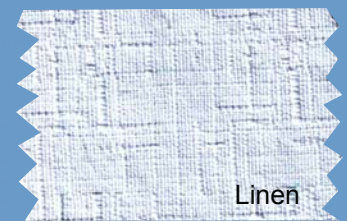
Polycord



Dyed Linen



Oxford



Linen



100% Cotton Open Weave,  
Dish Cloth/Towels



100% Cotton Blanket, Special  
Weave

## FLANNELS

- Bandages ■ Horse Tack
- Blankets ■ Clothing
- Buffing Fabrics
- Gloves



860 Regular Canton Flannel



100% Cotton Blanket,  
Striped Weave



Meat Wrap Cloth



1839DW Flannel



1240 Regular Canton Flannel

## FILTER FABRICS

- Water Fluids
- Air Permeability
- Oil



Sateen



## TICKING

- Mattresses
- Pillows
- Special Applications





# WOVEN FABRICS

## FURNITURE

- Slip Covers
- Upholstery
- Pillows



Herringbone Cotton



Cotton Chenille  
with Filling Stripe Pattern



Checker Pattern, Cotton



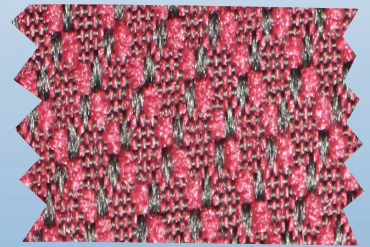
Yellow/Multi Stripe Olefin



Blue Stripe/Herringbone  
Olefin



Blue/Black Pattern Olefin



Red/Black Pattern Olefin



Raised Rib Pattern,  
90% Cotton  
10% Polyester



Filling Stripe,  
Cotton & Recycled  
Yarn



Cotton, Polyester, &  
Rayon Upholstery  
Fabric



Ripstop Weave,  
Repreve Yarn  
100% Polyester



Cotton Boucle Slub Yarn,  
Filling Stripe Pattern



Repreve, Polyester Recycled  
Yarn, Diamond Weave



Basket Weave, Cotton/  
Polyester Blend, Linen Color



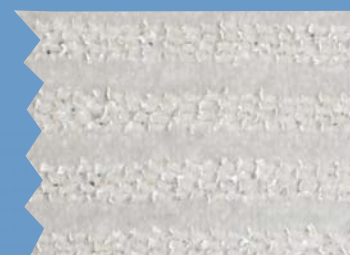
Narrow Gauge Filling Stripe,  
Cotton and Polyester



Cotton Boucle Slub Yarn,  
Upholstery Fabric



Rayon Boucle and Spun  
Cotton, Upholstery



Polyester Boucle and  
Chenille, Upholstery



Cotton and Linen Stripe,  
Herringbone Weave



Call 828-464-1901 or 828-464-0367 for more information!

# KNIT FABRICS



## JERSEY KNITS

- Cottons
- Poly/Cottons
- Acrylics
- Kevlar®
- Polyester



## TERRY CLOTHS

- Cottons ■ Poly/Cottons
- Acrylics ■ Kevlar®
- Polyester



## TUBULAR KNITS

- Cottons ■ Poly/Cottons
- Acrylics ■ Kevlar®
- Polyester



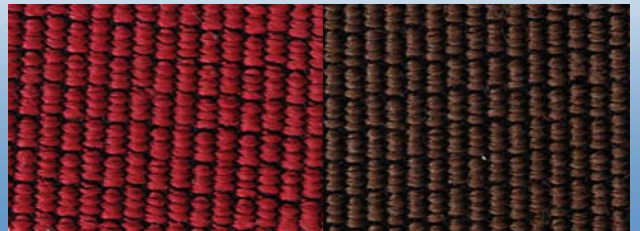
## INTERLOCK KNITS

- Cottons ■ Poly/Cottons
- Acrylics ■ Kevlar®
- Polyester



## POLYPROPYLENES

Automotive Seating



*We supply all forms of knitted fabrics for a variety of applications. We also service the glove industry with a multitude of products. Please call to discuss your needs. (828) 464-1901.*

## PVC DOTTING

- Gloves ■ Socks/Boots ■ Grippers ■ Hospital Applications ■ Anti-Slippage Applications
- Dotting is applied to Knit and Woven Fabrics including Kevlar®.

All Knitted Fabrics are Available in Various Widths, Weights, Dyed Colors, and Napped.



Our Services include: Custom Napping, Flame Retardant Treatment, Dyeing, and Fabric Dotting. Our Fabrics can be Sanitized, Softened, and Starched. Woven Flannels: We offer 100% Cotton Canton Flannels, Widths of 35", 37", 40", and 60" are readily available. Standard Weights are 6 oz. to 13 oz., Double Woven/Double Napped weights are 13.5 to 18 oz. Box Nap (Tiger Cloth) is available from 8 oz. to 18 oz. and up to 40" widths. Pad dyeing is available for all fabrics, weights, and widths. Specialty Woven: Moleskins, Sateens, Filter Fabrics, Cords, Polyester and Cotton Blends, Acrylics, Rayons and Kevlar®. We have widths from 35" to 60" and weights from 4 oz. to 18 oz.

Visit [www.CarolinaSpecialtyFabrics.com](http://www.CarolinaSpecialtyFabrics.com). Call 828-464-1901 or 828-464-0367.

# CONSUMER STYLE# KEY FOR INDUSTRIAL STYLES

Industrial #	Consumer Style#	Industrial#	Consumer Style#	Industrial #	Consumer Style#	Industrial #	Consumer Style#
<b>Page 4</b>		<b>Page 9</b>		<b>Page 12</b>		<b>Page 13</b>	
KV74257425	01815	333	06040	BSB9965TEXL	09838	S48L	09563
KVA65285	01827	233	06050	IG9999KTEXL	19504	52	09562
<b>Page 5</b>		I333	16041	IG9999KTEL	19503	IES50	19552
KV28L	01925	I233	16042	IG9999KTEM	19502	IS52	19562
HEATELIM	04151	I25TK	06301	IG9999KTES	19501	52ALB&TWL	09550
KV2811L	01994	BV999KW	06240	ITRDG999KTEXL	19938	IEBT52	19561
<b>Page 7</b>		BV999	06220	ITRDG999KTEL	19937	IBT52	19560
108W	01003	N/A	06310	ITRDG999KTEM	19936	IBL51RI	19564
112W	01064	N/A	06311	IDG99KTEXL	19921	<b>Page 14</b>	
I108W	11003	IC125	16101	IDG99KTEL	19920	IRSPLVCXL	21014
I208W	11004	IC127L	16120	IDG99KTEM	19919	IRSPLVCL	21013
I110W	11040	I25PFO	06250	IDG99KTES	19918	IRSPLVCM	21012
510W	01050	I125PFO	16250	IP9999KTEXL	19864	IRSPLVCS	21011
512W	01065	<b>Page 10</b>		IP9999KTEL	19865	IBLSPLVC2XL	21021
PC110W	01043	172	05010	IP999KTEM	19866	IBLSPLVCXL	21020
708W	01006	174	05000	IP9999KTES	19867	IBLSPLVCL	21019
110G	01042	IA174	15000	I9999PSXL	19833	IBLSPLVCM	21018
D1313	01080	176	05011	I9999PSL	19830	IABKSPLVCXL	21044
108N	01001	178	05001	I9999PSM	19831	IABKSPLVCL	21043
208N	01020	<b>Page 11</b>		I9999PS	19832	IABKSPLVCM	21042
<b>Page 8</b>		5049	09101	8999EL	09910	IABKSPLVCS	21041
150	04000	5049C	09102	8999EM	09911	K78WIL	01158
FPC120W	03006	5755S	09402	I8999KTEXL	19840	IHFXL	20053
IE150	14000	I5755S	19445	I8999KTEL	19841	IHFL	20050
FPC120SC	03017	IE5455S	19401	I8999KTEM	19842	IHFMBL	20051
116W	03005	IEPR5455S	19411	I8999KTES	19843	IHFS	20052
118W	03002	IPR5755S	19417	I99SBKTEXL	19884	IHFMBXL	20064
IHR150	14001	ITR5455S	19402	I99SBKTEL	19883	IHFMBL	20063
430	04040	I5455S	19441	I99SBKTEM	19882	IHFMBM	20062
430J	04041	I5455	19443	I99SBKTES	19881	IHFMBMBS	20061
<b>Page 9</b>		5955S	09308	I99SBKTEXS	19880	SC99EXL	09994
125	06001	5955	09309	IBP9999KTEXL	19820	SC99EL	09990
127	06020	<b>Page 11</b>		IBP9999KTEL	19819	SC99EM	09989
130	06002	IE9999KTEXL	19888	IBP9999KTES	19817	SC99ES	09992
132	06021	IE9999KTEL	19887	6999EXL	09804	5955S	09308
131	06005	IE9999KTEM	19886	6999EL	09801	5955	09309
IE125	16006	IE9999KTES	19885	6999EM	09802	<b>Page 15</b>	
I125	16001	I9999KTEXL	19854	6999ES	09803	112NPTD	01060
I127	16020	I9999KTEL	19850	I7999KTEXL	19824	FPC118NPTD	03003
I130	16004	I9999KTEM	19851	I7999KTEL	19806		
1999	16060	I9999KTES	19852	I7999KTEM	19807		

\*All CONSUMER STYLES HAVE A HANG TAG AND BARCODE FOR RETAIL.

CONSUMER STYLE# KEY FOR INDUSTRIAL STYLES

Industrial#	Consumer Style#	Industrial #	Consumer Style #	Industrial #	Consumer Style #
<b>Page 15</b>		<b>Page 17</b>		<b>Page 22</b>	
FP124RPTD	03004	IKCBKPD	18063	ILEDP5XL	12413
F174KW3PTD	05020	I13DK5PUPDXXL	18311	ILEDP5L	12412
118WPTD	03002	I13DK5PUPDXL	18310	ILEDP5M	12411
D1313	01080	I13DK5PUPDL	18309	ILEDP5S	12410
I1313ST	11080	I13DK5PUPDM	18308	ILED5XL	12513
<b>Page 16</b>		I13DK5PUPDS	18307	ILED5L	12512
K26B5L	01030	I13DKPUPDXL	18304	ILED5M	12511
K26B5M	01031	I13DKPUPDL	18303	ILED5S	12510
K26CB5L	01037	I13DKPUPDM	18302	IBLN4XL	12813
IK25CB5L	11037	I13DKPUPDS	18301	IBLN4L	12812
K26B11L	01110	<b>Page 19</b>		IBLN4M	12811
K26B11M	01111	BP	04125	IBLN4S	12810
K40B11L	01107	HPTMITT	04100	<b>Page 24</b>	
IK25CB11L	11038	<b>Page 20</b>		42020	same#
IK25CB11S	11039	ICG800NRS	18030	42021	same#
MNFWKD	01117	<b>Page 21</b>		42033	same#
K344WB5	01114	Y09	08021	42000	same#
K28ODWL	01603	CG800B	08005	42001	same#
K28ODWM	01602	9634	08101	42002	same#
AFK326C9	01121	963612	08102	42003	same#
AFK326C1	01120	963614	08103	IASAFE5455S	19425
<b>Page 17</b>		B09	08000	41011	same#
KHCL	01112	IB08	18001	41012	same#
KHCM	01113	IB012	18002	41000	same#
IKHCXL	11111	IB014	18003	41001	same#
IKHCL	11112	ICG1112RST	18121	40006	same#
IKHCM	11113	ICG1109RST	18122	40007	same#
IKHCS	11114	HYF085	08150	40008	same#
IKBLPDXL	18070	HYF09BT	08160	40009	same#
IKBLPDL	18071	<b>Page 22</b>		40010	same#
IKBLPDM	18072	IGNF157	12144	40003	same#
IKBLPDS	18073	IGNF158	12143	40011	same#
IKLPCL	18076	IGNF159	12142	40012	same#
IKLPCS	18078	INRL18L	12122	40013	same#
I13KNIGNPDXL	18204	INRL18M	12123	40014	same#
I13KNIGNPDL	18203	INRL18S	12124	40015	same#
I13KNIGNPDM	18202	IBLNEYLF28L	12132	40005	same#
I13KNIGNPDS	18201	IBLNEYLF28M	12133	<b>Page 25</b>	
I13KNIGPUPDXL	18210	IBLNEYLF28S	12134	IBBRBFL-6	17130
I13KNIGPUPDL	18209	IYLF18BL	12112	IBBRBFL-7	17131
I13KNIGPUPDM	18208	IYLF18BM	12113	IBBRBFL-8	17132
I13KNIGPUPDS	18207	IYLF18BS	12114	IBBRBFL-9	17133

\*ALL CONSUMER STYLES HAVE A HANG TAG AND BARCODE FOR RETAIL.

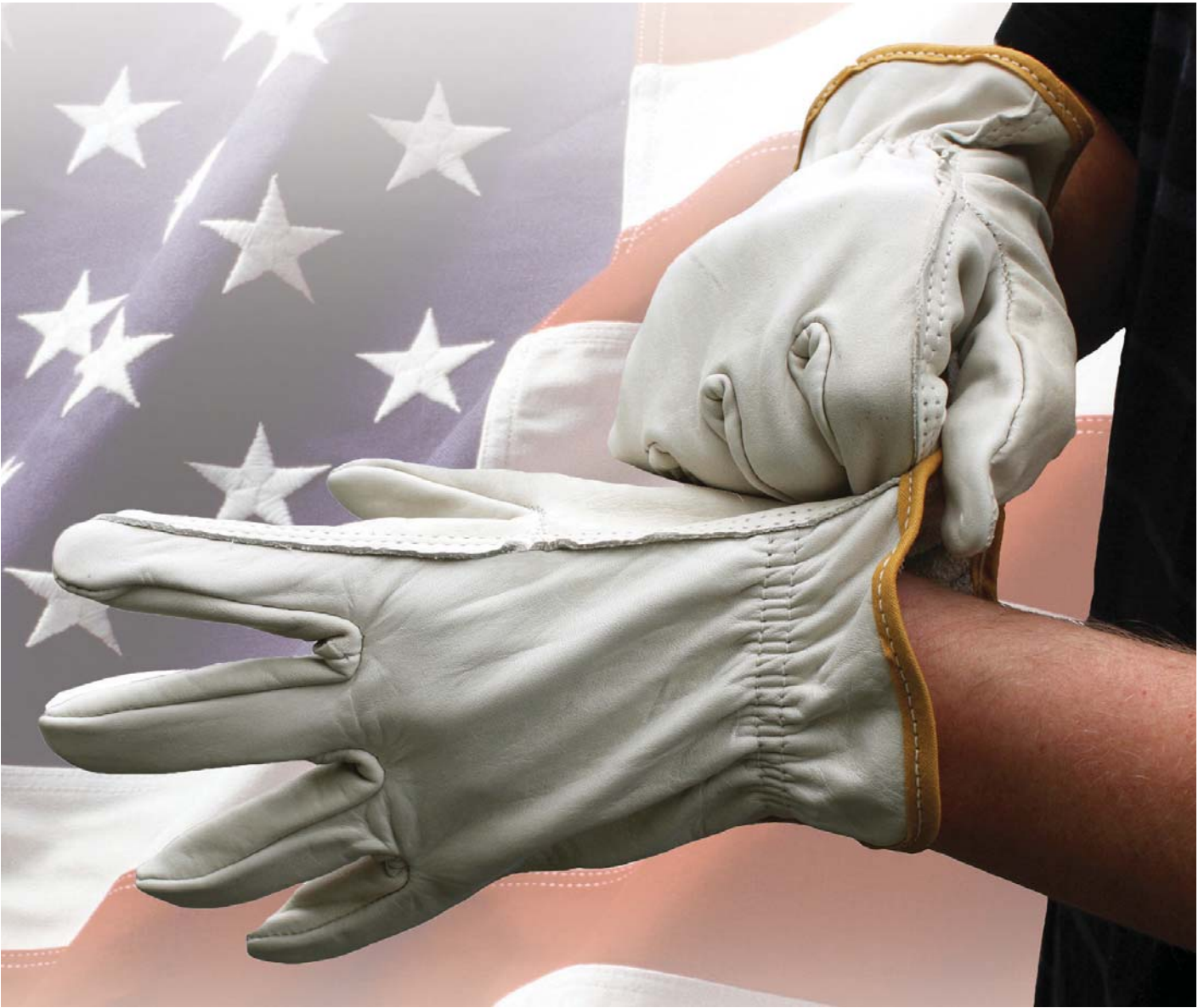
CONSUMER STYLE# KEY FOR INDUSTRIAL STYLES

Industrial#	Consumer Style#	Industrial #	Consumer Style #	Industrial#	Consumer Style#
<b>Page 25</b>		<b>Page 26</b>		<b>Page 28</b>	
IBBRBFL-10	17134	K78WIL	01158	ISGCANF	17312
IBBRBFL-11	17135	<b>Page 27</b>		ISGCGNF	17311
IBBRBFL-12	17136	IYRP	17100	ISGCCNF	17313
IBBRBFL-13	17137	IDRP	17105	ISGCAB	17317
IBBRBFL-14	17138	I35RC482-S	17060	ISGC	17319
IBBRBFL-15	17139	I35RC482-M	17061	ISGCCB	17315
I17YRBFL-7	17140	I35RC482-L	17062	ISGV	17318
I17YRBFL-8	17141	I35RC482-XL	17063	ISGIDV	17320
I17YRBFL-9	17142	I35RC482-2XL	17064		
I17YRBFL-10	17143	I35RC482-3XL	17065		
I17YRBFL-11	17144	I35RC482-4XL	17066		
I17YRBFL-12	17145	I35RC482-5XL	17067		
I17YRBFL-13	17146	I35RC482-6XL	17068		
I17YRBFL-14	17147	I35RC602-S	17070		
I17YRBFL-15	17148	I35RC602-M	17071		
I17YRBFL-16	17149	I35RC602-L	17072		
I16BRB-6	17150	I35RC602-XL	17073		
I16BRB-7	17151	I35RC602-2XL	17074		
I16BRB-8	17152	I35RC602-3XL	17075		
I16BRB-9	17153	I10RS-S	17040		
I16BRB-10	17154	I10RS-M	17041		
I16BRB-11	17155	I10RS-L	17042		
I16BRB-12	17156	I10RS-XL	17043		
I16BRB-13	17157	I10RS-2XL	17044		
I16BRBFL-6	17171	I10RS-3XL	17045		
I16BRBFL-7	17172	I25RS-S	17050		
I16BRBFL-8	17173	I25RS-M	17051		
I16BRBFL-9	17174	I25RS-L	17052		
I16BRBFL-10	17175	I25RS-XL	17053		
I16BRBFL-11	17176	I25RS-2XL	17054		
I16BRBFL-12	17177	I25RS-3XL	17055		
I16BRBFL-13	17178	I35RS-S	17000		
IBRHWFLST-6	17200	I35RS-M	17001		
IBRHWFLST-7	17201	I35RS-L	17002		
IBRHWFLST-8	17202	I35RS-XL	17003		
IBRHWFLST-9	17203	I35RS-2XL	17004		
IBRHWFLST-10	17204	I35RS-3XL	17005		
IBRHWFLST-11	17205	I35RS-4XL	17006		
IBRHWFLST-12	17206	I35RS-5XL	17007		
IBRHWFLST-13	17207	I35RS-6XL	17008		
IBRHWFLST-14	17208	I35RS-7XL	17009		
IDM	17300	<b>Page 27</b>			
		ISGCBMGNF	17310		

\*ALL CONSUMER STYLES HAVE A HANG TAG AND BARCODE FOR RETAIL.



Check our Capabilities Page at <http://www.carolinaglove.com/carolina-glove-design-capabilities.html>. We can custom make gloves for your business needs. Call 800-438-6888 for more information! Our friendly sales staff will be glad to talk with you!



**American Made, Family Owned Since 1946: Carolina Glove Company is one of the largest glove manufacturers in the United States. From the coldest refrigerated areas to the hottest foundries, from the farm to the backyard garden, we've got the matter in hand. For TOP QUALITY and FAST SERVICE choose USA MADE, choose Carolina Glove Company.**

**“CUSTOMER SATISFACTION IS OUR TOP PRIORITY!”**

**“WE GREATLY APPRECIATE YOUR BUSINESS!”**

# **CAROLINA**

## **GLOVE & SAFETY COMPANY**

**P.O. Box 999, Conover, NC 28613**  
**Phone: 800-438-6888, Fax: 828-464-1710**  
**sales@carolinaglovecompany.com**  
**www.carolinaglove.com**



**Scan To Visit Us!**

751027